

# The Shib

Community - Future & Tech - Fun

**BEYOND  
LIKES**

---

**KARMA  
SYSTEM**

**USER RANKING  
SYSTEMS**

---

**THE TRUST  
SCORE**







## EDITION SUMMARY

The Shib 74th edition:

### **Shib's Rewarding Evolution**

#### **1. Shib Preview**

Beyond Likes: The Rise of Online Contribution Tracking

#### **2. Shib Spotlight**

Shiba Inu Karma System: Earn Points and Gain Influence

#### **3. Next-Gen Shib**

Shiba Inu Karma Shifts the Balance of Power in Crypto Governance

#### **4. Shib Deep Dive**

Digital Trust: How Reddit, Stack Overflow, More Rank Users

#### **5. Shib Horizons**

Trust by the Numbers: How Ratings and Reviews Shape Our Digital World

#### **6. Shib Sensei:**

Unlocking Influence: A Guide to Shiba Inu's Karma System

#### **7. Future and Tech**

The Blockchain Traffic Jam: Why True Scalability Remains Elusive

#### **8. Doggy Bytes**



# GM Shib Army!



## ***GM Shib Army, crypto degens, and the world!***

Discover the latest insights in the 74th edition of The Shib Magazine! We're excited to share a series of articles that focus on the evolution of online engagement, moving from transitory metrics to sustainable systems that genuinely acknowledge and reward meaningful contributions.

In this issue, we look at the challenges posed by superficial metrics and investigate how reputation systems can foster a fairer and more inclusive online environment.

If you'd like to know how the Shiba Inu community is poised to redefine participation through the innovative Shiba Inu Karma initiative, our Shib Spotlight feature has got you covered. Find out how contributions are prioritized over coin ownership, empowering community members to earn significant influence and rewards based on their active involvement. The accumulation of Karma points allows individuals to gain recognition and access a range of benefits, thus nurturing a culture of engagement and reciprocity.

We're also pleased to welcome back our Next-Gen Shib column to offer insights on a reputation-based governance layer within the Karma framework. Here, we examine how this innovative approach rewards on-chain participation. Discover how these changes can lead to a more inclusive digital space where every contribution counts.

Our Shib Deep Dive article offers an in-depth look at the vital function of reputation systems in online communities. By examining platforms such as Reddit and Stack Overflow, we reveal how these systems enhance user engagement and instill trust, making them essential for the vitality of digital spaces.

Additionally, this edition elucidates the role of star ratings, derived from reputation systems, in establishing digital trustworthiness. We also trace the evolution of social capital in the digital age, exploring how trust has transformed in response to technological advancements and user dynamics.

Don't miss our informative Karma FAQ where we provide comprehensive insights into the workings of Karma, including strategies for earning points and unlocking exclusive benefits. This resource is designed to help you navigate the Shib ecosystem and elevate your influence within the community.

Finally, we tackle the pressing issue of the blockchain scaling crisis, assessing why current solutions may not be adequate and what innovative approaches are being pursued to achieve true global capacity. Join us in exploring the challenges facing blockchain technology and the bright minds working towards viable solutions.

As you immerse yourself in the 74th edition, we invite you to engage with the diverse topics covered, especially the transformative potential of contribution tracking and community empowerment. Happy reading!

# Beyond Likes: The Rise of Online Contribution Tracking

Moving beyond superficial metrics, online contribution tracking quantifies meaningful user actions to foster more transparent and engaging digital communities.

As the digital landscape matures, a fundamental shift is underway: moving from fleeting metrics towards systems focused on contribution tracking, quantifying genuine user participation to shape a more transparent and engaging online world.

The digital world is awash in data, yet genuine value and consistent participation often remain obscured. Fleeting likes, easily gamed follower counts, and other superficial metrics have proven inadequate as true measures of meaningful engagement or contribution. This creates a disconnect where effort doesn't always translate to visibility.

This is where the potential of activity-tracking systems emerges – a deliberate effort to move beyond these shallow signals and capture the essence of user involvement. Think of it like Experience Points (XP) in gaming: just as players earn XP for completing quests or defeating challenges, these online systems assign quan-

tifiable measures to valuable user actions. This approach moves beyond simple popularity to reflect demonstrable effort and participation.

For millennia, societies have sought ways to identify and elevate those who contribute to the common good. From ancient honors for distinguished citizens to modern patents for inventors, recognizing valuable actions has driven progress. The challenge now is translating this principle effectively into the digital realm using robust measurement.

The current reliance on superficial metrics has created a distorted landscape where popularity often trumps substance, and genuine contributions are lost in the noise. This breeds frustration among community members who feel their efforts go unnoticed. The need isn't just for reward, but for clear acknowledgment of demonstrable participation through better tracking.



## The Problem: Why Superficial Metrics Demand Contribution Tracking

In response to this growing dissatisfaction, a new generation of online platforms are experimenting with systems designed to move beyond superficial metrics and recognize the value of demonstrable activity and contribution.

These systems, often inspired by principles from game theory and [behavioral economics](#), aim to create a more equitable and rewarding online environment by directly incentivizing specific valuable actions and fostering a culture of participation. Functioning much like XP systems, they provide a clearer picture of user engagement than simple likes or follows.

Like the [guilds of medieval Europe](#), which fostered craftsmanship and ensured quality through rigorous standards and peer recognition, these activity-tracking systems seek to establish a transparent framework for acknowledging user actions, providing users with a sense of progression and accomplishment, and fostering a culture of active participation.

## How Contribution Tracking Empowers Communities

The promise of contribution tracking lies in its capacity to transform online ecosystems by making participation visible and measurable. Consider how open-source software thrives because contributions (code commits, bug reports) are tracked and attributed, or how [Wikipedia's](#) value is built on the sum of millions of tracked edits.

These examples demonstrate how facilitating and acknowledging contribution unlocks innovation. The next evolution involves building structures, such as specific contribution tracking mechanisms like the Karma System, to streamline the process of quantifying demonstrable participation. This tracked activity can then inform broader reputation systems.

In this edition, we explore this transformative shift, delving into the mechanics of contribution tracking, examining its potential to reshape [online communities](#) by focusing on demonstrable effort, and imagining a future where participation is actively measured through transparent contribution tracking.

## Understanding the Mechanics of Contribution Tracking

Just as blockchain challenges traditional finance, the rise of contribution tracking recontextualizes our understanding of engagement. These systems provide quantifiable data points reflecting user effort, which can be factored into reputation assessments or unlock system privileges.

Perhaps the most profound implication is the potential to empower individuals by making their actions visible and quantifiable through contribution tracking. This creates a more level playing field where consistent, [valuable participation](#) contributes to one's standing, using measurable scores instead of relying solely on initial status or follower count.



## Contribution Tracking and a New Era of Online Engagement

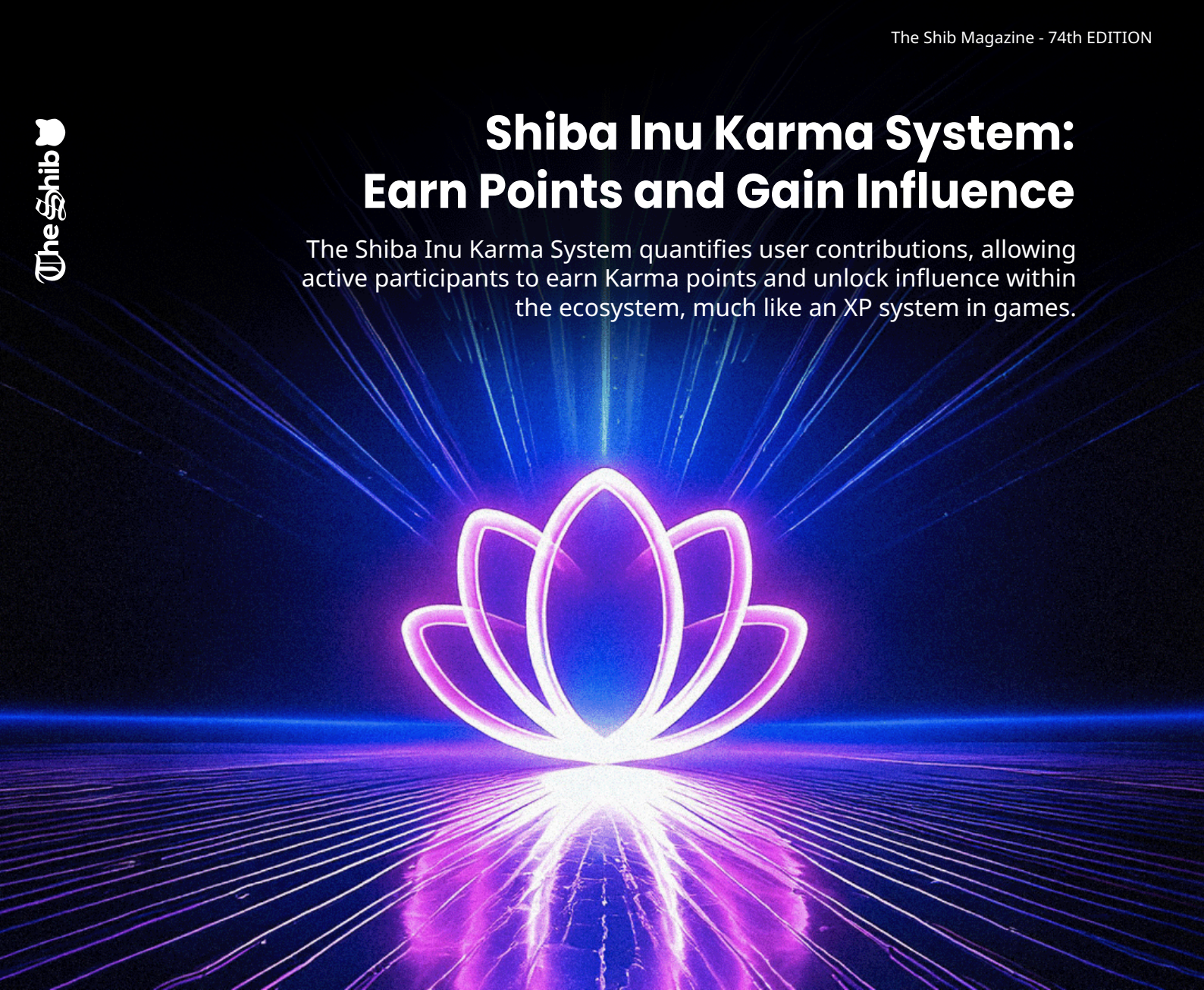
What if the future of online engagement was built on a foundation where meaningful actions were quantified through contribution tracking, contributing to systems where collective community efforts were visibly harnessed?

A quiet revolution is underway, fueled by the desire for more meaningful interaction and the recognition that value lies in consistent, [positive actions](#). As we explore this new landscape, we discover the future is cultivating participation, quantifying effort via robust contribution tracking (like Karma systems), acknowledging contributions, and building a transparent digital world where activity truly counts.

As we learn to track and acknowledge, the deeper question becomes: what kind of digital future, built on what values, will we choose to construct together?

# Shiba Inu Karma System: Earn Points and Gain Influence

The Shiba Inu Karma System quantifies user contributions, allowing active participants to earn Karma points and unlock influence within the ecosystem, much like an XP system in games.



Shiba Inu flips the script with its innovative Shiba Inu Karma System, moving beyond passive holding to reward active participation with tangible influence and recognition, all tracked transparently on the Shibarium blockchain.

Forget just hodling. Now, your activity unlocks influence within the Shiba Inu ecosystem. The newly unveiled Shiba Inu Karma System functions much like an experience point (XP) [system](#) in gaming, meticulously tracking your valuable contributions – every helpful interaction, every DeFi move on ShibaSwap, every supportive transaction using ecosystem tokens.

Your Karma score becomes more than just a number; it's a measure of your engagement, unlocking potential rewards and access, solidifying your standing in the community. Higher activity translates directly to greater visibility and potential influence. It's time to demonstrate your commitment to the Shiba Inu journey. Start contributing. Start earning Karma.

## What is the Shiba Inu Karma System?

The Shiba Inu Karma System is a point-based mechanism. It tracks positive actions within the Shiba Inu community and its platforms. Think of it like Experience Points (XP) in a video game. Completing tasks earns XP; specific positive actions in the Shiba Inu world earn Karma points.

This first release is a beta version. It is the foundation. Calculating initial scores requires syncing historical user activity across various platforms. **This data synchronization process may take some time.** Users should expect Karma point calculations and individual scores to change during this beta period. This will happen as the data sync completes and as the team adds more ecosystem products and trackable actions. What exists now is just the start.

Your Shiba Inu Karma score is a public record of your engagement. Higher scores signal greater participation. This could unlock benefits or influence.

The system records scores on the Shibarium blockchain. This transparency allows other developers to potentially use the Karma system for their own projects built on Shibarium. An intake process is planned soon. This will let other teams formally integrate their products with the Karma framework. Karma points are earned through action. They cannot be bought or traded. This ensures genuine participation is measured.



## How Can You Earn Shib Karma?

Earning Shib Karma involves actively supporting the Shiba Inu network. Core actions contributing to your score in this beta phase include:



### Wallet Activity

Transactions involving Shiba Inu ecosystem tokens (\$SHIB, **\$BONE**, \$LEASH, **\$TREAT**) generate Karma points. Sending, receiving, and swapping these tokens within the ecosystem demonstrates activity and supports platform liquidity.



### ShibaSwap Participation

Providing liquidity to ShibaSwap pools, creating new token pairs, staking tokens, swapping, adding new tokens, and validating stakes are key Karma-generating actions on the decentralized exchange.



### Community Engagement

Constructive discussion, valuable content creation, and supporting other users within official Shiba Inu community channels contribute to your Karma score. Documentation notes Karma reflects "reputation and contribution... earned through actions like posting content, participating in discussions, and engaging in ShibaSwap transactions.

## Ensuring Fairness: The Logarithmic Curve

A vital aspect of the Karma calculation is the use of a specially designed logarithmic curve formula. This mathematical approach ensures that users with significantly larger holdings or transaction volumes ("whales") do not gain disproportionately high Karma points compared to regular users.

It aims to level the playing field, rewarding consistent participation more heavily than just sheer **volume**. This extensible formula considers multiple variables, making the Karma calculation more nuanced and fair.



## The Power of SHIB KARMA



**Enhanced  
Voting Power**



**Increased  
Visibility**



**Exclusive  
Features**



### The Power of Karma: What Will You Unlock? (Beta)

As Karma accumulates, users unlock a range of benefits that provide real influence within the ecosystem:


**Enhanced Voting Power:** Higher Karma levels may factor into or contribute weight towards voting power in future community governance proposals, potentially giving more active contributors a [stronger voice](#).

**Increased Visibility:** Users with higher Karma scores gain greater visibility within community platforms, signalling their level of activity and contribution.

**Potential for Exclusive Features:** Access to certain features, tools (like increased proposal/draft limits based on activity level), or events might incorporate Karma thresholds, providing unique opportunities to highly engaged participants.

### Shiba Inu Karma Levels: Your Journey to Influence (Current Beta Structure)

The Karma System employs a tiered structure, with users progressing through various levels as they accumulate [Karma points](#). These levels range from Pup (10-50 points) to Dogo Master (10,000+ points). Each level signifies milestones in activity and may unlock benefits tied to that engagement level.




**Pup**
10-50

x1.0 Voting Power

- No special Privileges.

#### Pup (10–50 points): x1.0 Voting Power

At the entry point of the Karma hierarchy, the 'Pup' represents the nascent engagement of a new participant. While offering no special privileges, the level confers a foundational voting power, a symbolic representation of their initial stake in the decentralized governance of the Shiba Inu ecosystem.




**Young Mutt**
50 - 100

x1.0 Voting Power

- Special Badge
- No special privileges

#### Young Mutt (50 - 100 points): x1.0 Voting Power

The 'Young Mutt' ascends to the first tier of recognition within the Karma system. Maintaining the base voting power, members at this level are distinguished by a special badge—a digital marker signifying their increased engagement, though not yet unlocking tangible advantages beyond symbolic acknowledgment.




**Graduated Shiba**
100 - 500

x1.2 Voting Power

- Special "Verified" badge
- DAO voting power multiplier

#### Graduated Shiba (100 - 500 points): x1.2 Voting Power Special

Members achieving "Graduated Shiba" status gain increased influence within the ecosystem, indicated by an augmented voting power (x1.2). Further signifying their enhanced standing, these users receive a "Verified" badge and a multiplier applicable to DAO voting, providing a more impactful voice in community governance.




**Shib Apprentice**
500 - 1000

x21.4 Voting Power

- Previous privileges
- Upvote power doubled
- 5 drafts, 2 proposals

#### Shib Apprentice (500 - 1000 points): x1.4 Voting Power

Reaching the "Shib Apprentice" tier unlocks expanded avenues for creative contribution and leadership within the Shiba Inu community. With voting power amplified to x1.4, plus the carried-over benefits of previous levels, these users gain the capacity to significantly influence discourse through doubled upvote power and the opportunity to initiate both draft proposals and formal governance initiatives.




**Aspiring Grandshiba**
5000 - 10000

x1.6 Voting Power

- Previous privileges
- Replies shown at the top
- 10 drafts, 5 proposals

#### Aspiring Grandshiba (5000 - 10000 points): x1.6 Voting Power

The "Aspiring Grandshiba" tier marks a consolidation of influence within the Shiba Inu ecosystem. Maintaining prior privileges while increasing voting power to x1.6, members at this level gain elevated visibility for their contributions, with replies featured prominently in community discussions. More tools are provided to users that allow them to have 10 drafts, and 5 proposals.




**GrandShiba**
5000 - 10000

x1.8 Voting Power

- Previous privileges
- Moderator opportunity
- 20 drafts, 10 proposals

#### GrandShiba (5000 - 10000 points): x1.8 Voting Power

The designation of "GrandShiba" reflects a significant commitment to the long-term health and governance of the Shiba Inu ecosystem. Sustaining previously acquired privileges and augmenting voting power to x1.8, members at this level are granted the opportunity to assume moderator roles, acting as stewards of community conduct and contributing to the maintenance of platform integrity. Additionally, the user is capable of 20 drafts, and 10 proposals.



**Dogo Master**
10000+

x2.0 Voting Power

- Previous privileges
- Comments shown at the top
- 50 drafts, 20 proposals

#### Dogo Master (10000+ points): x2.0 Voting Power

As the apex of the Shib Karma hierarchy, the "Dogo Master" represents the highest echelon of influence and community leadership within the Shiba Inu ecosystem. In addition to retaining all prior privileges and commanding a maximum voting power of x2.0, Dogo Masters gain the power of prioritized visibility. Dogo Masters have the capacity to have more visibility with more tools at their disposal such as 50 drafts, and 20 proposals.

### Shib Karma is Earned, Not Bought

Karma points cannot be purchased or transferred. They are tied to your decentralized identity on [Shibarium](#), ensuring the score reflects genuine activity. Karma scores are public on user profiles, acting as a transparent indicator of contribution. This system emphasizes real, organic engagement over financial manipulation.

With the beta launch of the Shiba Inu Karma System, the core team introduces a novel way to recognize and incentivize participation, built transparently on-chain. It signals a shift, rewarding the actions that build and sustain the community.

While this is the initial version, with plans for expansion and integration with more products and external teams, the foundation is laid. Start engaging, start contributing, and start earning Karma points on Shibarium.

*The future of Shiba Inu is being shaped by those who are building it. The opportunity to contribute – and be rewarded – is now. Are you ready to be a part of its future?*

# Shiba Inu Karma Shifts the Balance of Power in Crypto Governance

Shiba Inu Karma introduces a reputation-based governance layer that rewards on-chain participation, aiming to reduce the dominance of token wealth and promote a more inclusive, action-driven ecosystem.



In the Shiba Inu ecosystem, power is not bought — it's earned.

The new Shiba Inu Karma System (Beta) is rewriting the rules of governance by tracking and rewarding on-chain participation — not wallet size. Running directly on Shibarium, Karma acts like experience points in a game, recording wallet interactions, liquidity activity, and community contributions as public, verifiable scores.

Where traditional decentralized governance often defaults to coin count — more tokens, more say — Shiba Inu is breaking away from that model. Karma offers a merit-based alternative: rewarding what users do, not just what they hold. This could eventually tip the balance of influence toward the most active and engaged community members.

## Shiba Inu Karma: A New Metric of Engagement

In many DAOs, wealth equates to power, potentially skewing decisions. Shiba Inu aims for a more inclusive model.

Karma emerges as a potentially game-changing element. By linking potential future voting weight influence to verifiable on-chain activity rather than only token holdings, it encourages Shibizens to contribute value through meaningful actions tracked on Shibarium:

- Wallet transactions keeping the ecosystem active.
- Adding liquidity on ShibaSwap or staking tokens (on Shibarium).
- Future integrations may include: Posting quality content, engaging constructively (mechanisms TBD).
- Future governance may incorporate: Upvoting or downvoting proposals.



Crucially, to ensure fairness, Shiba Inu has implemented an important logarithmic curve formula for Karma calculation. This mathematical approach is designed specifically to prevent whales (users with extremely high transaction volumes) from gaining disproportionately large Karma scores compared to regular, active users.

It rewards consistency and broader participation, aiming for a more equitable reflection of engagement than pure volume metrics might allow. This extensible formula considers multiple variables for a nuanced score. Each qualifying activity accumulates Karma points, highlighting how real participation, tracked transparently on-chain, contributes to the community's direction.

## Shib Karma: Levels, Perks, and the Climb to Dogo Master

Rather than a [one-size-fits-all approach](#), the Shiba Inu community has a tiered system to reflect an individual's journey and standing. Every new member starts at the Pup level (once they've earned a minimum of 10 points) and can

climb all the way to Dogo Master (10,000+ points). The tiers continue, each raising the voting multiplier and unlocking new privileges, until finally reaching Dogo Master at a 2.0× voting boost. The higher your Karma, the stronger your voice in community decisions — an apt reward for consistent dedication.

This tiered structure reflects an individual's journey. The higher your Karma, the stronger your potential voice in future community decisions — a planned reward for consistent dedication within the beta framework and beyond. By climbing these tiers, Shibizens develop a demonstrated stake in the ecosystem's well-being. Someone who devotes time and effort is given a pathway to a proportionately stronger voice — fostering earned influence.

## Incentivizing Positive Engagement

Shiba Inu's governance model pushes beyond mere "voting weights." Each Shibizen's Karma score is a living reflection of how they interact with the [ecosystem](#): Are they discussing proposals, helping others in the community forums, or adding liquidity to keep the markets stable? Every good deed counts.



## Why Does This Matter?

**Reduced Toxic Behavior:** When your reputation translates to genuine influence, spam, insults, or low-effort posts can harm your standing.

**Encouraged Collaboration:** High-Karma Shibizens often become mentors, introducing newcomers to best practices in liquidity pooling or social engagement—knowing their standing grows with the success of others.

**Community Accountability:** A user who repeatedly behaves in ways the community deems unproductive will see their growth stall. This self-moderating mechanism curbs the "bad apple" effect.

In a sense, the system "game-ifies" governance, but with a constructive twist: the game is rigged to reward helpful, beneficial actions that keep Shiba Inu's environment thriving.

## Balancing Token-Based and Reputation-Based Power

Tokens remain essential, driving economics on ShibaSwap and Shibarium. But Shib Karma infuses the governance layer with potential for fairness and depth.

- **Combined Influence:** Future governance models may reflect both token stake and Karma multiplier, recognizing value locked and quality of engagement.
- **Democratic Access:** New members can earn Karma through basic on-chain actions, lowering the barrier to demonstrating engagement compared to pure wealth accumulation.
- **Long-Term Commitment:** Active small holders can potentially gain more governance weight via Karma than passive whales, fostering an “earn your place” culture.

- **Expanding Tracked Actions:** Incorporating more ecosystem products and activities into Karma scoring post-beta.
  - **Refining the Logarithmic Curve:** Adjusting the formula based on real-world data to maintain fairness.
  - **Automated Anomaly Detection:** Developing tools to flag suspicious activity aimed at artificially boosting Karma.
  - **External Integration & Growth:** Actively developing the planned intake system to allow external teams building on Shibarium to leverage and integrate with Karma, broadening its utility and strengthening the network effect.
  - **Quest System Implementation:** Rolling out specific tasks for users to earn additional Karma.
- This iterative approach, leveraging the transparency of an on-chain system, is key to Karma's long-term success.

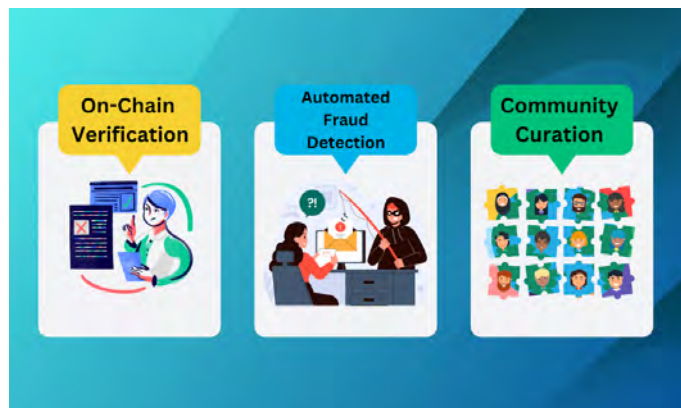


## Practical Effects on Governance

- **Real-Time Proposals (Future State):** When governance proposals are live on Shibarium, Karma levels may decisively shape outcomes via weighted voting.
- **Debate Quality (Potential):** Future platform iterations could highlight contributions from higher-Karma members, surfacing insights from proven contributors.
- **Governance as a Social Experience (Evolving):** By rewarding on-chain actions, Karma inherently links practical usage with potential governance standing.

## Potential Pitfalls and Future Refinements

No XP-like system is perfect, especially in beta. The Shiba Inu team acknowledges the potential for gaming the system and is committed to monitoring and refining Karma calculation methods. The fully on-chain nature of Karma on Shibarium aids transparency in this process. Potential future refinements include:



## Shiba Inu Karma as Culture

Beyond the algorithms and multipliers, Shib Karma has cultivated a cultural mindset within Shiba Inu. It's a daily reminder that the ecosystem values positive action and ongoing contributions over everything else.

A Pup who asks thoughtful questions in the DAO hub might find themselves rising to Shib Apprentice in no time, their insights shaping votes that directly impact the ecosystem's treasury, partnerships, or product roadmap.

Karma, in this sense, becomes a social contract:

You help the community → The community helps you gain a stronger voice.

You keep learning and contributing → Your seat at the governance table grows more assured

## Governance by Good Deeds

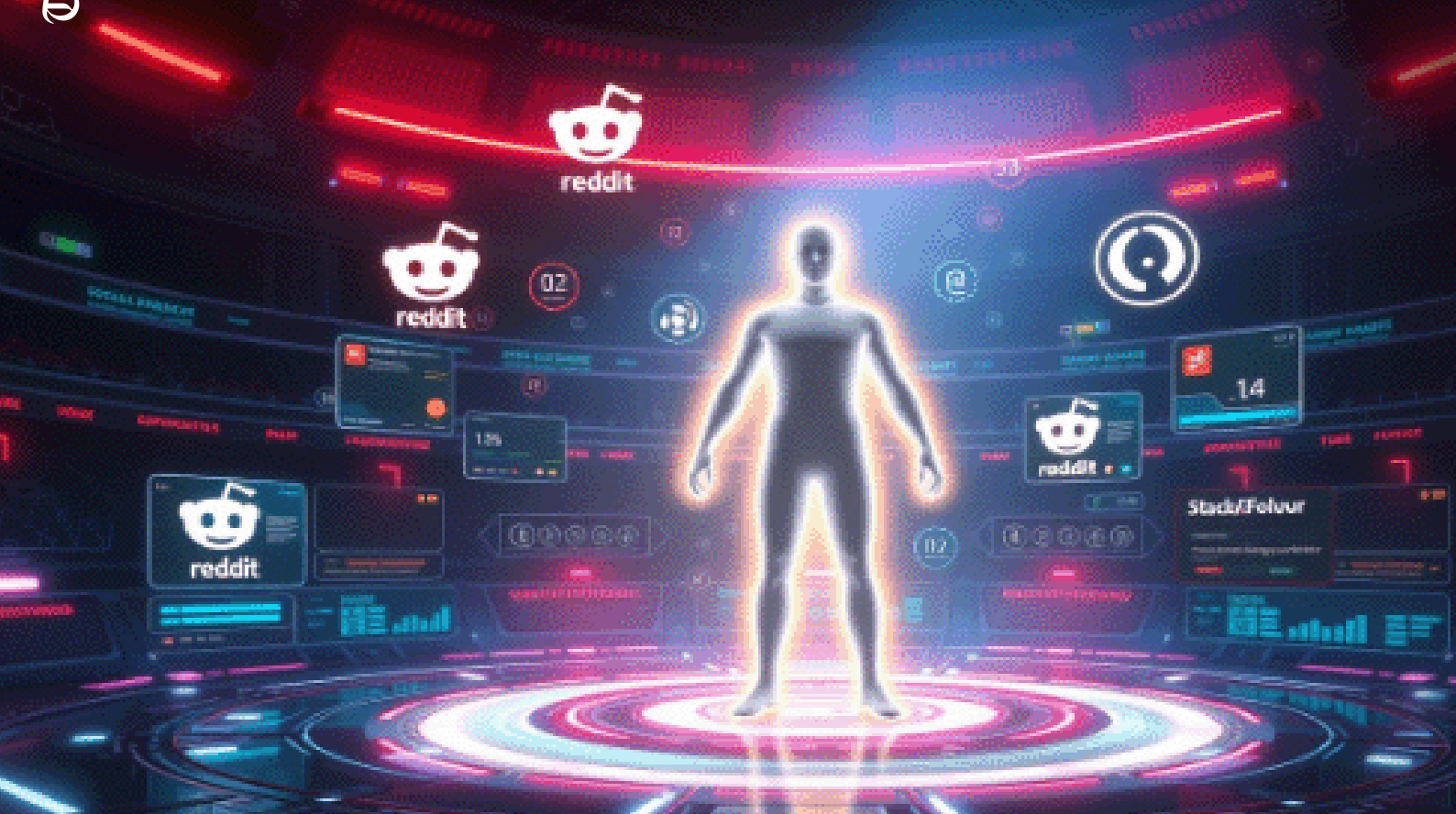
In a crypto world often dominated by speculation, Shiba Inu Karma injects a layer of verifiable, on-chain governance potential based on participation. While tokens are critical, Karma measures the heart of the ecosystem — its people and their dedication in the Shibarium.

By elevating demonstrable activity as a key factor, Shiba Inu ensures future governance isn't solely dictated by wealth, but significantly influenced by those who invest themselves through action. It's an innovative approach, potentially pioneering truly inclusive blockchain governance.

The journey from Pup to Dogo Master demands participation, but the reward is more than just a potential vote boost. It's a testament to an earned voice, transparently recorded on-chain. As Shiba Inu refines Karma beyond its beta launch, every interaction shapes not just individual standing, but the collective, decentralized future of the ecosystem.

# Digital Trust: How Reddit, Stack Overflow, More Rank Users

Step into the digital arena, where a few voices command the spotlight while the silent majority observes.



Step into the digital arena, where a few voices command the spotlight while the silent majority observes.

The well-documented 90-9-1 principle reveals that 90% of users remain passive, 9% contribute sporadically, and only 1% generate the bulk of content. For instance, on Stack Overflow, [Jon Skeet](#) has earned over 1.2 million reputation points, illustrating how a single contributor can wield significant influence.

Such dynamics reveal the dual-edged nature of reputation systems, which drive engagement while potentially concentrating authority. This

is a phenomenon that's increasingly relevant in today's [decentralized crypto landscape](#) that fuels innovation and fosters resilient communities, transforming digital interactions globally.

A reputation system is a critical mechanism within digital platforms that assigns scores, badges, or ranks to users based on their contributions and interactions within the community. In the context of cryptocurrency [ecosystems](#), its primary objectives are to incentivize positive behavior, promote trust among users, and enable peer-driven governance.

By rewarding valuable contributions, these systems reinforce accountability and encourage active engagement, while simultaneously providing a framework for mitigating undesirable activity.

Ultimately, a well-designed reputation system fosters transparency, facilitates informed decision-making, and sustains the integrity and growth of decentralized communities. This drives both innovation and long-term success in the digital space.

Reputation systems are potent tools for engagement and trust, but their success depends on a design tailored to the community's unique needs and goals. By aligning metrics, incentives, and governance with specific values, these systems can effectively promote quality contributions and transparency.

This article delves into the role of reputation systems within online communities, focusing on how platforms like Reddit and Stack Overflow utilize these systems to maintain engagement and foster trust.

## Case Study 1: Reddit

Reddit is a popular social media platform known for its diverse user-generated content, organized around various "subreddits" that cater to specific topics and interests. Reddit employs a straightforward upvote/downvote mechanism that directly influences a user's Karma, serving as a public measure of community engagement.

At its core, the upvote/downvote mechanism is simple and intuitive, effectively elevating popular content and rewarding quality contributions. This straightforward approach allows for immediate feedback and can surface high-value discussions.

However, the system is not without its challenges. It is vulnerable to manipulation, with coordinated voting and brigading potentially distorting Karma scores. Moreover, the emphasis on collective

sentiment can foster echo chambers, suppressing dissenting opinions and promoting a "hive mind" mentality. In light of these insights, several pivotal questions come to mind.

**Firstly, does Karma truly reflect a user's contribution to the community?** While high Karma can indicate that a user's posts have resonated with the community, it doesn't always capture the full value of their contributions. Factors like timing and the specific culture of subreddits can distort a user's actual impact. This means that valuable, nuanced insights might be overlooked if they don't align with mainstream opinions.

**Secondly, is the system fair to all users?** The answer is debatable. New users or those sharing dissenting views often struggle to accumulate Karma, while established users may benefit from the "hive mind" mentality previously mentioned.

In essence, while Reddit's Karma system effectively promotes engagement, its ability to accurately and equitably assess individual contributions remains imperfect.



## Case Study 2: Stack Overflow

Another popular reputation system often used by users is Stack Overflow. Stack Overflow is a premier question-and-answer platform tailored for programmers and technical professionals, fundamentally transforming how developers collaborate and resolve challenges. As a dynamic hub for knowledge exchange, it has cultivated a comprehensive, peer-reviewed repository that shapes the modern software development landscape.

One of its notable strengths lies in its robust reputation system, which rewards high-quality answers with points and badges. This system effectively incentivizes users to provide meticulous, well-researched responses, fostering a culture of expertise and ensuring that the most accurate solutions are prominently featured. Consequently, Stack Overflow has become an invaluable resource, continually expanding its archive of technical insights that benefit developers worldwide.

However, the platform's commitment to technical precision is not without its drawbacks. The rigorous standards and competitive environment can be intimidating for newcomers, who may struggle to meet the expectations of a community steeped in expertise. Additionally, the emphasis on detailed technical accuracy can sometimes overshadow the need for accessible, user-friendly explanations, potentially alienating those less versed in complex coding jargon.

Stack Overflow's reputation system is highly effective at identifying and rewarding true experts. By awarding points and badges for well-researched, accurate answers, the system ensures that those who consistently provide valuable knowledge gain recognition.

However, the emphasis on accumulating reputation points can inadvertently foster a competitive environment. While this competitive drive often results in meticulous, high-quality responses, it may also encourage some users to prioritize point gains over genuine collaboration. This dynamic can lead to a scenario where the pursuit of reputation overshadows cooperative problem-solving, potentially discouraging newcomers or those whose strengths lie in collaborative efforts.

### Case Study 3: Quora

Quora is a dynamic question-and-answer platform that invites a diverse community of experts, enthusiasts, and casual users to share insights on a wide range of topics. One of Quora's major strengths is its emphasis on detailed, narrative-driven responses that blend personal experience with expert analysis, offering readers nuanced perspectives. Its clean interface and organized format facilitate thoughtful discourse and encourage comprehensive discussions.

However, the platform faces challenges in verifying the credibility of contributors, and its reliance on popularity-based voting sometimes elevates trendy opinions over more substantive, lesser-known contributions. This can lead to a mix of high-quality answers alongside subjective or anecdotal content.

In comparison to Reddit, Quora offers a more structured environment that focuses on depth rather than rapid-fire conversation, while Reddit's informal approach tends to generate lively but sometimes fragmented discussions.

Against Stack Overflow's strict, technical Q&A framework, Quora provides broader subject matter appeal, albeit with less rigorous quality control. Quora's unique blend of personal insight and expertise offers a distinctive alternative for readers seeking comprehensive answers across diverse topics.



### Case Study 4: Duolingo

Duolingo is a widely recognized language-learning platform that has revolutionized how millions approach new languages. Its engaging, [game-like interface](#) encourages daily practice by transforming lessons into interactive challenges. At the heart of Duolingo's approach is a reputation system that rewards progress with points, badges, and streaks, effectively gamifying the learning process. This system motivates users by providing immediate feedback and visible achievements, fostering a sense of accomplishment and friendly competition.

One of the platform's greatest strengths is its simplicity and accessibility. Users quickly understand how to earn rewards, which keeps them engaged and returning for more practice. However, the reliance on gamified metrics can sometimes lead to a superficial focus on point accumulation rather than genuine language proficiency. Critics argue that this may encourage rapid completion of lessons at the expense of deeper learning.

In comparison to reputation systems on platforms like Reddit and Stack Overflow, Duolingo's model is less about [community](#) validation and more about personal progress tracking.

While Reddit and Stack Overflow leverage peer feedback to validate expertise, Duolingo relies on algorithmic measures of performance to motivate individual learners. This distinction spotlights both the innovative application of gamification in education and the challenges of ensuring that such systems truly promote comprehensive learning.

### Comparative Analysis: Stack Overflow vs Reddit vs Quora vs Duolingo

Online reputation systems vary widely in design and impact. Stack Overflow, Reddit, Quora, and Duolingo illustrate these differences across several key dimensions.

#### Transparency

In terms of transparency, Stack Overflow clearly outlines its scoring rules and guidelines, providing users with explicit criteria, whereas Reddit's rules are simpler and less formally documented. Quora and Duolingo offer immediate feedback through upvotes or gamified metrics, though their underlying rules can sometimes seem opaque.

#### Fairness

Regarding fairness, Stack Overflow's meritocratic approach rewards high-quality contributions, yet Reddit's entrenched hierarchies may disadvantage those new to the system. Duolingo's system effectively motivates daily practice, but its focus on point accumulation may oversimplify language mastery.

#### Resistance to Manipulation

Resistance to manipulation is strongest on Stack Overflow, where stringent moderation minimizes gaming, while Reddit's open voting mechanism remains vulnerable to coordinated brigading. Alignment with community goals is most evident on Stack Overflow, which incentivizes technical expertise, whereas Quora's popularity-based voting can favor trendy topics over depth. Finally, robust moderation on Stack Overflow — driven by community review — contrasts with the more variable enforcement seen on Reddit and Quora.

Each system reflects trade-offs between clarity, fairness, resilience against abuse, and alignment with community values, emphasizing the challenges in designing an equitable reputation framework.

### Recommendations for Designing Better Reputation Systems

To design more effective reputation systems, it's crucial to incorporate nuanced **feedback mechanisms** that go beyond basic numerical scores. Prioritizing qualitative assessments alongside quantitative metrics ensures that contributions are evaluated more holistically, reflecting both the depth and impact of a user's input.

**Transparency is key** — providing clear insights into the algorithm behind reputation scores helps foster trust and user engagement. The system should also **reward collaboration, mentorship, and other behaviors that benefit the greater community**, promoting a culture of knowledge-sharing over individual competition.

**Tailoring the reputation system to the specific needs and goals of a community** enhances its significance, ensuring it aligns with the core values and objectives of that space. Additionally, continuous feedback and iteration on system design

should be an ongoing process to adapt to evolving user behavior and community culture.

Finally, **providing clear dispute resolution mechanisms** ensures that users feel fairly represented, helping to maintain a balanced and equitable environment. By following these principles, reputation systems can better capture meaningful contributions and foster a more inclusive and supportive community.

## FAQs: Understanding Reputation Systems

### What are the core mechanics of each reputation system?

- **Reddit:** Utilizes a simple upvote/downvote mechanism that adjusts a user's Karma.
- **Stack Overflow:** Features a detailed points and badges system that rewards accurate and insightful answers.
- **Quora:** Employs community upvotes to rank detailed, narrative-driven responses.
- **Duolingo:** Uses gamification through points, badges, and streaks to encourage regular language practice.

### What types of behaviors does each system incentivize?

- **Reddit:** Encourages immediate community engagement and the surfacing of popular content.
- **Stack Overflow:** Rewards technical precision, thorough problem-solving, and peer review.
- **Quora:** Fosters comprehensive insights and personal expertise through detailed storytelling.
- **Duolingo:** Motivates consistent learning habits and incremental progress.

### How well does each system align with the goals and values of its community?

- Each system is tailored to its community's focus—be it open discussion (Reddit), technical excellence (Stack Overflow), narrative depth (Quora), or engaging education (Duolingo).

### How susceptible is each system to manipulation or abuse?

- **Reddit:** Vulnerable to coordinated brigading and vote manipulation.
- **Stack Overflow:** More resistant due to stringent moderation and clear guidelines.
- **Quora:** Can be swayed by popularity, sometimes favoring trendy opinions over quality.
- **Duolingo:** Relatively secure, though its focus on gamification may encourage superficial progress.

### What are the key lessons learned from these different systems?

- Transparency, tailored design, a balance of quantitative and qualitative metrics, and continuous monitoring are crucial for creating equitable, robust reputation frameworks.

## Conclusion

Let's summarize a few key takeaways:

- **No One-Size-Fits-All Solution:** Effective reputation systems must be tailored to the specific needs and goals of each community.
- **The Importance of Transparency:** Clear explanations of how the system works are essential to build user trust.
- **Ongoing Monitoring and Adjustment:** Reputation systems require continuous oversight and refinement to ensure they function as intended.
- **The Power of Qualitative Feedback:** Supplementing quantitative metrics with qualitative insights provides a more nuanced view of user contributions.

**Rewarding Collaboration:** Systems should prioritize recognizing users who support others and enhance the community's collective knowledge.

- **Ethical Considerations:** Designers must address potential biases, manipulation, and echo chambers to maintain fairness and integrity.

Reputation systems are essential for cultivating healthy online communities, providing structured recognition for quality contributions and fostering trust among users. They serve as the backbone for dynamic interactions, promoting expertise, collaboration, and mentorship. Platforms like Reddit, Stack Overflow, Quora, and Duolingo demonstrate that a well-designed system can significantly enhance community engagement.

Looking ahead, the evolution of reputation systems holds great promise for reshaping digital interactions. By incorporating transparent algorithms and nuanced feedback mechanisms, these systems can capture the full spectrum of user contributions. It ensures that online communities remain vibrant, inclusive, and adaptable to the diverse needs of their members globally.

# Trust by the Numbers: How Ratings and Reviews Shape Our Digital World

Star ratings rule our world: but are digital trust signals trustworthy, or are we losing genuine connection?



You scan the Yelp reviews, trust those five stars, and click "book." In our digital world, ratings and reviews aren't just suggestions—they are trust, a currency shaping where we go and who we believe.

When you search for a new brunch spot, do you trust the five-star average on Yelp? Are you reassured by a 99 percent positive rating for a seller on eBay? If so, you are not alone. In a world mediated by screens and algorithms, reputation systems have become modern compasses, guiding choices about who—or what—to trust.

"Reputation systems are fundamentally about increasing or decreasing the level of trust in a person or thing, based on collective perception," Randy Farmer and Bryce Glass wrote in [Building Web Reputation Systems](#).

From humble beginnings on eBay to far-reaching influence on platforms like Amazon and Airbnb, reputation metrics are everywhere. These digital trust signals represent more than numbers. They function as an emerging currency, one that can boost sales, increase occupancy or even sway professional [opportunities](#).

## Building Trust Among Strangers

In the mid-1990s, eBay introduced one of the earliest large-scale reputation features: buyer-seller feedback. People could trade with strangers across the globe because they had a basic reference point of credibility.

“Feedback mechanisms can foster trust in online marketplaces, allowing even strangers to transact with one another—often for significant sums,” Paul Resnick and Richard Zeckhauser said in a 2006 study published in [Experimental Economics](#).

They found that sellers with strong positive ratings on eBay could earn 5–10 percent higher auction prices. It was the beginning of a new era in which an online score helped establish confidence among anonymous users.



## Stars, Reviews and the Rise of Yelp

While eBay paved the way, Yelp brought star-based reviews to the mainstream. Suddenly, a quick scan of user opinions could make or break a restaurant's dinner rush. Michael Luca, a professor at Harvard Business School, studied this effect:

“Online consumer reviews substitute for more traditional forms of reputation, reducing the uncertainty that consumers face when making purchase decisions,” Luca wrote in [Reviews, Reputation, and Revenue: The Case of Yelp.com](#).

He found that a one-star rise in a Yelp rating correlated with a 5–9 percent increase in revenue for a restaurant. It was clear that digitized reputations had replaced—or at least supplemented—traditional stamps of approval like word-of-mouth or newspaper reviews.

## Social Capital in the Digital Age

Reputation systems extend beyond dining and retail. On social platforms such as Reddit or Stack Overflow, points and upvotes measure the community's perception of each [contributor](#). Those with high scores gain influence and status, while downvotes reduce visibility.

“Our relationships of trust, social solidarity, and the set of practices that sustain them are both transformed by and critical to the success of networked peer production,” Yochai Benkler wrote in [The Wealth of Networks](#).

Benkler's insight highlights how open-source software and volunteer-driven communities rely on these digital signals. Contributors who earn a solid reputation based on quality work can guide projects, mediate conflicts or propose changes.



## The Teen Perspective

Reputation concerns also reach younger users. Danah Boyd, a Microsoft Research scholar and founder of Data & Society, has conducted extensive studies of teenage behavior on social media.

“Teens... manage multiple publics and apply diverse strategies to build credibility and maintain reputation,” Boyd wrote in It's [Complicated: The Social Lives of Networked Teens](#).

She found that young people curate their digital personas, balancing the desire to be appealing to peers while still remaining palatable to family or future employers.

## Becoming a “Superhost”

Reputation systems influence entire business models. Airbnb uses ratings, reviews and communication scores to evaluate its hosts.

A 2017 [Airbnb report](#) indicated that “superhosts” had occupancy rates 20–30 percent higher than average. That added status—visible through a badge—directly translates to trust, which in turn means more bookings.

## Possible Dark Sides

All that potential comes with risks. Jaron Lanier warned about the commodification of reputation in *Who Owns the Future?*

“When reputation is your currency, it might be traded away without your awareness, [shaping your opportunities](#) in unseen ways,” Lanier wrote.



One issue is the rise of fake reviews, or “review bombs.” Fraudulent five-star ratings can artificially inflate or tank a product's perceived quality.

A 2018 Harvard Business Review [analysis](#) found that some businesses pay for positive reviews, undermining the credibility of the entire system. Airbnb listings have also faced bias accusations. A 2016 Cornell University study suggested that hosts' and guests' perceived ethnicity can influence reviews, sparking concerns about discrimination.

## Technology vs. Connection

Sherry Turkle, an MIT psychologist, has studied how technology reshapes personal interactions. In [Reclaiming Conversation](#), she voiced concerns that online ratings might become a stand-in for real relationships.

"We come to rely on quantified reputation as a proxy for trust, but it can overshadow direct, personal engagement," Turkle said.

Reducing trust to a number may gloss over important nuances about a service or a person. Are we losing the chance to truly connect because we rely on star ratings instead of deeper dialogue?

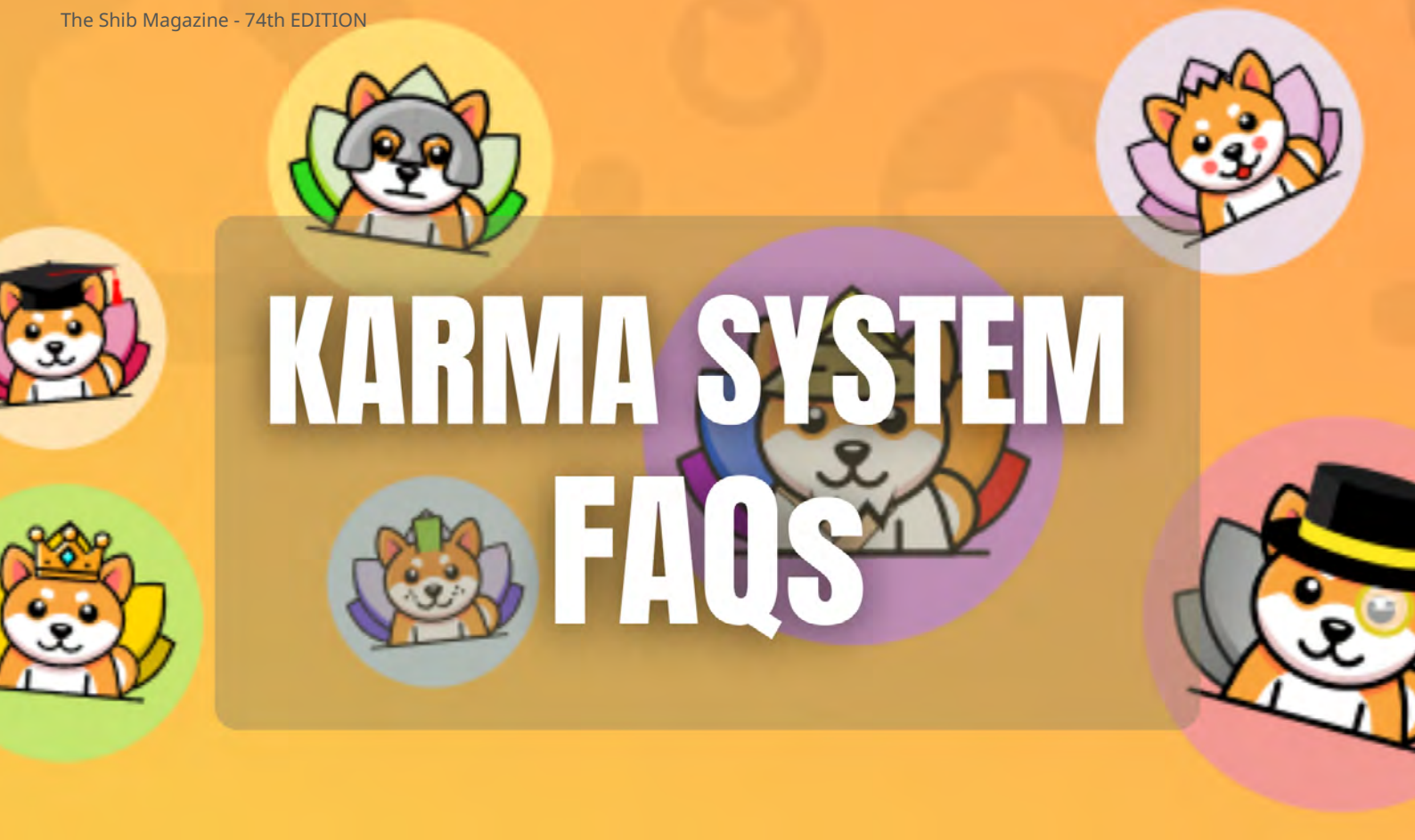
## What's Next?

As social, commercial and professional interactions continue moving online, reputation metrics will likely grow in importance. Decentralized reputation systems—built on [blockchain technology](#)—could offer users more ownership over their data and let them move their scores across platforms. Others argue for more detailed scoring categories to capture different facets of reliability and expertise.

"Our relationships of trust... are both transformed by and critical to the success of networked peer production," Benkler wrote.

That line from Benkler underscores the overarching lesson: well-designed [reputation systems](#) foster new possibilities for collaboration and commerce, but they must be managed carefully. Bias, misuse and the oversimplification of trust remain persistent challenges. By staying vigilant, we can build systems that reflect people's true qualities and preserve our capacity for genuine human connection.





## Unlocking Influence: A Guide to Shiba Inu's Karma System

Shiba Inu's new Karma System rewards active community engagement with on-chain Karma points, offering a fresh approach to ecosystem participation.

The Shiba Inu ecosystem is constantly evolving and one of the newest additions is the Shiba Inu Karma system – currently launching in its beta phase.

Karma is designed to recognize and reward active participation, positive contributions, and overall engagement within the community, functioning much like an

experience point (XP) system common in gaming. It's a way to celebrate the members shaping the future of Shiba Inu.

This FAQ will walk you through everything you need to know about earning Karma, how it works, and its impact on the Shiba Inu community.

### Q: What is Karma, and how does it relate to Reputation?

A: Karma is primarily an on-chain experience point (XP) system built on [Shibarium](#). It measures your activity and positive contributions within the Shiba Inu ecosystem. Think of it like gaining XP in a game for completing actions.

It is not technically a reputation system itself, but your Karma score will be considered as a key component in calculating a user's broader reputation within the ecosystem in the future. Karma incentivizes positive behavior and recognizes active users.

### Q: Is this the final version of the Karma system?

A: No, the current release is a beta version. This means the system is live and functional, but Shiba Inu plans to include more ecosystem products and user actions that will generate Karma points in future updates. The system will evolve based on community feedback and ecosystem growth.



### Q: How does Karma work technically?

A: Karma is unique because it's a fully on-chain XP system operating directly on the Shibarium network. This ensures transparency and makes your score verifiable on the blockchain. This might be one of the first, if not the first, fully on-chain systems of its kind. Because it's on-chain, external development teams can potentially leverage the Karma system for their own applications built on Shibarium. Shiba Inu plans to introduce an intake system soon to formally allow other teams and products to integrate with the Karma framework.

### Q: How do I earn Karma points during the beta phase?

A: You earn Karma points through specific, verifiable actions:

**Engaging in Wallet Transactions (on Shibarium):** Sending and receiving tracked Shiba Inu ecosystem tokens (like \$SHIB, \$BONE - specific list may evolve) on the Shibarium network. Token swaps and transfers within the ecosystem also contribute.

**Participating on ShibaSwap (on Shibarium):** Key actions like adding liquidity, creating liquidity pairs, swapping tokens, adding new tokens, and validating stakes all currently increase your Karma score.

**Contributing to the Community:** While primary tracking is on-chain, positive engagement in designated official community channels (posting valuable content, participating constructively) may also be factored in through specific mechanisms outlined by the team.

*(Note: The range of actions earning Karma is expected to expand after the beta phase).*

### Q: How is Karma calculated fairly? Is it just based on volume?

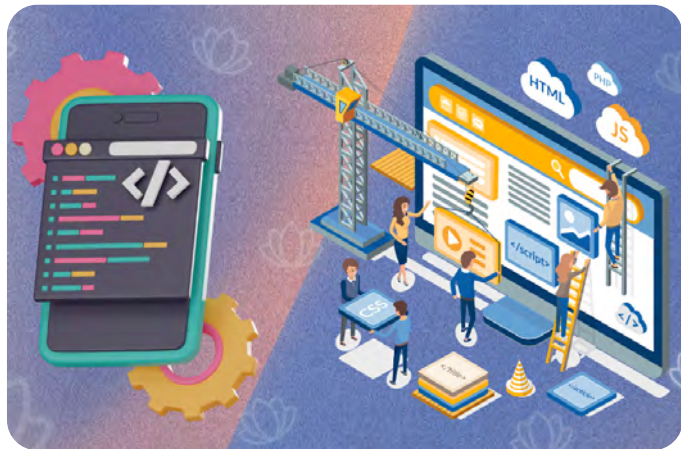
A: No, it's not just about volume. Shiba Inu has implemented an important logarithmic curve formula for calculating Karma points. This sophisticated formula is designed specifically to ensure fairness and prevent whales (users with very large holdings/transactions) from gaining drastically disproportionate points compared to regular users. It rewards consistent participation across multiple variables, making the system more equitable.

### Q: What actions specifically earn Karma? (Beta Examples)

A: During beta, actions supporting ecosystem activity, liquidity, and growth on Shibarium are rewarded. Examples include:

- Sending/receiving tracked ecosystem tokens above certain minimums (if applicable).
- Adding liquidity to designated ShibaSwap pools.
- Creating new liquidity pool pairs on ShibaSwap.
- Swapping tokens on ShibaSwap.
- Validating stakes related to ShibaSwap or Shibarium.
- (Community actions as defined by official guidelines).

*(Reminder: This list will likely grow as more products integrate post-beta).*



### Q: What is the significance of Karma in the Shiba Inu ecosystem?

A: Karma serves primarily as an XP system to incentivize positive and constructive behavior. It provides a transparent, on-chain measure of a user's contributions and activity level. It encourages users to connect, engage, and be rewarded for actions that benefit the ecosystem's health and growth. Your Karma score will be a factor in determining your overall standing and reputation.

### Q: Where can I see my Karma score?

A: Once your wallet is connected to the relevant Shiba Inu platform (e.g., the upcoming Shibarium portal or integrated dApps), your Karma score should be displayed on your profile. Access methods may vary slightly by platform. (Original text mentioned a lotus flower icon — retained if accurate for the specific platform).

### Q: Can I hide or change my Karma score?

A: No, you cannot hide or change your Karma score. It is a transparent and immutable reflection of your interactions within the [Shiba Inu ecosystem](#) and serves as an indicator to other users about your engagement and contributions.

### Q: What can I do with my Karma score/level?

A: Your Karma level, determined by your score, can impact your access and influence. Benefits are tied to demonstrating positive participation and may evolve post-beta. Potential benefits include:

- **Increased Voting Power:** Karma levels may grant greater weight in future community governance proposals on Shibarium.
- **Enhanced Visibility:** Higher Karma may lead to greater visibility on official community platforms.
- **Exclusive Features/Access:** Potential access to specific features, tools, events, or even participation requirements based on Karma thresholds.

### Q: What is my Karma level/boost?

A: Your Karma level, also referred to as your Karma boost, represents your overall standing within the Shiba Inu ecosystem. It is earned through positive interactions with Shiba Inu products ([ShibaSwap](#), SNS, The Shib) and other community members (upvotes, comments).

### Q: Can I trade my Karma scores?

A: No, you cannot trade your Karma scores. They are tied to your decentralized identity and wallet and are intended to represent your unique contributions to the Shiba Inu ecosystem.

### Q: What are the Karma levels? (Beta Structure)

A: The system uses tiers, each potentially unlocking benefits (points/benefits subject to potential adjustment post-beta):

- Pup (10–50 points)
- Young Mutt (50 - 100 points)
- Graduated Shiba (100 - 500 points)
- Shib Apprentice (500 - 1000 points)
- Aspiring Grandshiba (5000 - 10000 points)
- GrandShiba (5000 - 10000 points)
- Dogo Master (10,000+ points)



#### Q: What are Quests?

A: Quests are planned as a future feature. They will be specific missions or tasks users can complete within the ecosystem to earn additional Karma points. Details will be announced via official Shiba Inu channels.

#### Q: How do Wallet Transactions contribute to Karma scores?

A: Performing wallet transactions on Shibarium with tracked Shiba Inu ecosystem tokens demonstrates active use and support for the network's activity and liquidity, thus earning you Karma.

#### Q: How does the Karma system benefit the Shiba Inu community?

A: The Karma system benefits the Shiba Inu [community](#) by:

- **Promoting active participation:** Rewarding users for their contributions encourages active engagement within the ecosystem.
- **Enhancing ecosystem growth:** By incentivizing users to take part in the ecosystem, karma contributes to its overall growth and development.
- **Fostering a positive community environment:** The system encourages collaboration and the creation of valuable content, promoting a more positive and impactful community.
- **Increasing community influence:** Karma points give users a greater voice in community decisions, increasing overall influence.
- **Supporting liquidity and activity:** Wallet transactions that earn karma also support the ecosystem's liquidity and activity.
- **Rewarding meaningful participation:** The system incentivizes ongoing, meaningful participation in the ecosystem.

# The Blockchain Traffic Jam: Why True Scalability Remains Elusive

Blockchain promised speed but hit a wall. Explore the scaling crisis, why current fixes aren't enough, and the quest for true global capacity.



The digital highway groans under the weight. Blockchains promise a decentralized world, swift and open to all. Yet, the reality is often a traffic jam.

Fees spike unexpectedly. Transactions crawl. Users wait, frustrated. This fundamental struggle—the quest for true, global-scale performance without sacrificing the core vision—defines blockchain's most critical and persistent [challenge](#). The revolutionary technology strains against its own limits, searching desperately for room to grow.

## The Unyielding Blockchain Trilemma

The core issue lies in a concept developers call the "blockchain trilemma." A network typically must choose between optimizing for decentralization (power spread among many), security (resistance to attack), and scalability (handling high transaction volume).

Excelling at all three simultaneously has proven elusive. Early blockchains like Bitcoin prioritized [decentralization](#) and security.

This meant deliberate constraints. Only a limited number of transactions could fit into each data block, added to the chain roughly every ten minutes.

This design worked for a nascent network. But as popularity grew, the limitations became clear.

During peak demand, the network clogged. Transaction fees, needed to incentivize processors called miners, soared.

Users faced long waits for confirmation. Ethereum, designed for complex applications beyond simple payments, encountered similar hurdles. Its ability to host thousands of "smart contracts" created even greater demand for [block space](#), leading to notorious spikes in processing fees, sometimes costing users hundreds of dollars for a single operation.

### Blockchain Scaling Layer 1: Adding Lanes to the Highway

The search for solutions began. One early approach involved trying to expand the main network itself, known as Layer 1 scaling.

Think of it like adding more lanes to the highway. Ideas included increasing the size of each data block or splitting the network into parallel processing chains, a technique called sharding.

But these Layer 1 changes are complex and contentious. Bigger blocks might require more powerful computers to participate, potentially centralizing power. Sharding introduces intricate communication challenges between the shards. Progress has been slow and often involves difficult trade-offs.



### Shifting Traffic: The Rise of Layer 2 Solutions

This led developers down a different path: [Layer 2 scaling](#). The idea here is akin to building express lanes or feeder roads alongside the main highway. Layer 2 solutions process transactions off the main blockchain, bundling them together before settling a summary back on the highly secure Layer 1.

Several Layer 2 designs emerged. "State channels," like Bitcoin's Lightning Network, allow users to conduct many transactions privately off-chain, only reporting the final balance to the main network.

They can be very fast and cheap for frequent, small payments between specific parties. But they require users to lock up funds and can face challenges routing payments across the [network](#) smoothly.

### Rollups Take Center Stage: Optimistic vs. ZK

More recently, "rollups" have gained significant traction, particularly on Ethereum. Optimistic rollups assume bundled transactions are valid unless challenged, relying on "fraud proofs" to catch errors.

Zero-knowledge (ZK) rollups use complex cryptography to generate "validity proofs," mathematically guaranteeing the correctness of the bundled transactions without revealing the underlying data. Networks like Arbitrum, Optimism, zkSync, and Starknet have deployed rollups, significantly increasing transaction capacity and lowering fees compared to using Ethereum directly.

### Persistent Bottlenecks: Why Layer 2 Isn't Enough

Yet, even these sophisticated Layer 2s haven't fully solved the problem. They still rely on the main Layer 1 for security and data posting.

If Layer 1 gets congested, Layer 2 fees can rise. Rollups also introduce their own complexities. Some rely on centralized "[sequencers](#)" to order transactions initially, raising concerns about single points of failure or censorship, though plans exist to decentralize these.

Managing interactions between different Layer 2 networks can also be cumbersome for users and developers. The landscape becomes fragmented.

We haven't reached a point where using blockchain applications feels as seamless and cheap as using the traditional web, especially during high demand. The traffic jam, while perhaps eased in places, still persists.



### The Modular Future: Specialization and Layer 3

This reality is pushing innovators toward [newer concepts](#). One is "modularity."

Instead of one blockchain trying to do everything (process transactions, secure the network, store data), modular designs propose separating these functions. Specialized chains could focus solely on providing data availability, while others focus on settlement, and yet others on fast execution.

Projects like Celestia are pioneering this approach. The theory is that specialization could allow each layer to optimize fully, potentially breaking through the trilemma's constraints.

Building on this, some envision "Layer 3s." These could be hyper-specialized networks built on top of Layer 2s, tailored for specific [applications](#) like gaming or social media, offering even greater scalability and customization. Think of them as dedicated access ramps built off the Layer 2 express lanes.

### The Ongoing Quest for True Blockchain Scalability

The quest continues. The current landscape, dominated by Layer 1 limitations and emerging Layer 2 solutions, represents significant progress.

Transactions are faster and cheaper than they once were. But "true" scalability – the ability to handle global-scale demand smoothly, cheaply, and without compromising decentralization or security – remains an aspiration.

The focus now shifts towards modular architectures and potentially Layer 3 ecosystems, hoping these next-generation designs can finally pave the way for blockchain technology to fulfill its initial, expansive promise. The destination is clear, but the road is still under construction.

# DOGGY BYTES

While the crypto market can often seem like a stormy sea, we believe in harnessing the power of positivity to help you sail through! This section is dedicated to sharing the good vibes and uplifting updates from the Shiba Inu ecosystem because we want to make the toughest times feel a little more bearable. Join us in Doggy Bytes for your weekly infusion of optimism and cheer!



## BEST OF SHIB



The Best of SHIB presents a curated selection of the most exciting news, biggest trends, and unforgettable highlights from across the vibrant Shiba Inu ecosystem. It showcases the top moments, groundbreaking developments, and community achievements that make SHIB, BONE, LEASH, TREAT, Shibarium, and other Shiba Inu initiatives so dynamic. Readers get a dose of pure SHIB positivity!



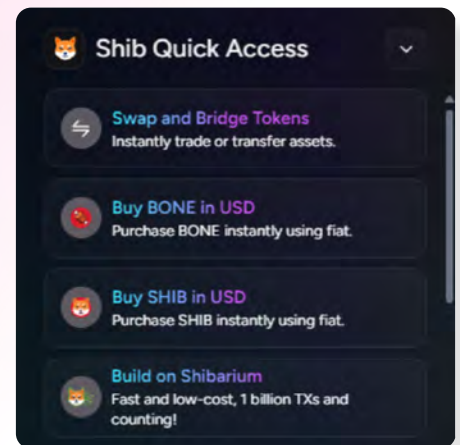


Credit: CryptoWizard101

BONE also recently **surged an astonishing 150%**! Its 24-hour trading volume at the time reached nearly \$11 million. The BONE derivatives market mirrored this enthusiasm too. Trading volumes for BONE futures and other derivatives reached over \$315,000 in just one day!

Shib.io's **latest update** takes the SHIB experience to the next level. The new "Quick Access" feature is designed to allow users to navigate the platform with ease. With fewer clicks to access key functions on the platform, it's definitely easier now to find what you need. It provides direct links to essential actions—like swapping and bridging tokens, buying BONE or SHIB in USD, building on Shibarium, purchasing Shib names, and more. Explore the new and improved Shib.io today!

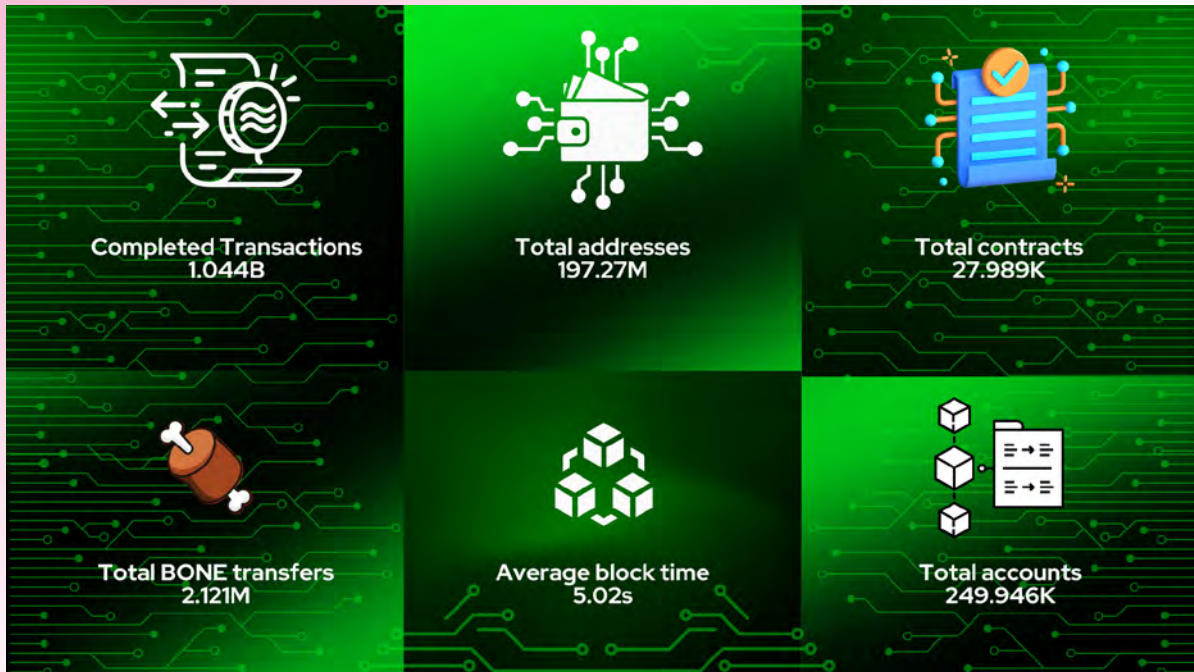
Despite the bloodbath that's been going on in the markets these last few weeks, we'd like to look at the silver lining—the moments of triumph that remind us why we love this community. Take Shiba Inu (SHIB) for example: *The Shib Daily* **reported** on Friday that SHIB was recently positioned against a pivotal resistance wall, which a crypto analyst believes could catalyze a breakout. CryptoWizard101 has projected an initial target of \$0.000015, with the potential for a staggering 67% surge up to \$0.00002 if the bullish momentum continues to build.



## SHIB IN NUMBERS

Welcome to SHIBA INU in Numbers, your weekly source for positive insights into the Shiba Inu ecosystem! Each week, we highlight the key metrics and milestones for SHIB, BONE, LEASH and TREAT, focusing on price appreciation and other positive developments. We also track the exciting progress of Shibarium, Shiba Inu's Layer-2 scaling solution, bringing you key stat . Plus, we shine a light on the growth of Shib Torch.





## SHIBARIUM

Shibarium continues to demonstrate steady growth, as indicated by the latest data reflecting increased activity on the platform.

On Monday, the completed transactions increased by approximately 7.5%, from 971.336 million in our last report to 1.044 billion. The number of total addresses created currently stands at 197.27 million, while the total contracts experienced a small increase from 27.711 thousand to 27.989 thousand.

Meanwhile, the number of total BONE transfers has edged up from 2.091 million in our last report to 2.121 million. This reflects a modest increase of around 1.4%.

As for the total accounts created, there are currently 249.946 thousand, representing a 0.5% increase compared to our last report.

# ShibTorch 🔥

**Total Burned**  
**850,149,892 SHIB**

**3.80% ↑**  
**from last week**

## SHIB BURN

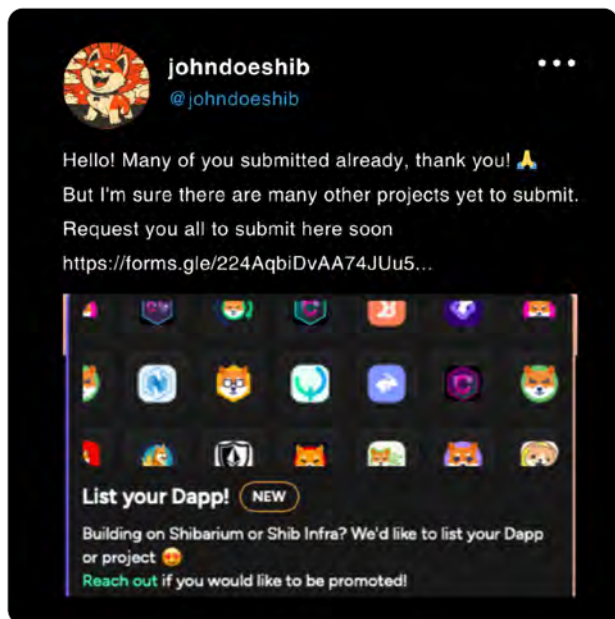
The Shib community has witnessed a remarkable uptick in token burns, with a total of 850,149,892 SHIB incinerated as of Monday, reflecting a 3.80% rise from last week.

This increase is largely attributed to the efforts made possible through ShibTorch, a dedicated platform that enables community members to burn their tokens effectively.

By harnessing the power of the community burn portal, SHIB holders are not only contributing to the reduction of the token's supply but also promoting a sense of unity and purpose within the Shib ecosystem.



# TOP Dogs

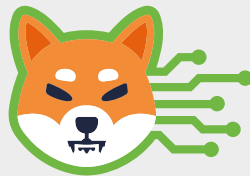


Shibarium builders, it's your time to shine! If you've been developing awesomesauce products on Shibarium, you're invited to sign up [here](https://forms.gle/224AqbiDvAA74JUu5...) and join the Telegram group for devs!

SHIB claimed the second spot on Crypto Insights' 'Most Mentioned Highlight #Memecoins last 24h' chart on Friday, ahead of \$NOT, \$FLOKI, and other altcoins!



BONE was spotted in the latest 'Top Layer 2 Projects by Social Activity' chart from PHOENIX. So if your exchange isn't listing this powerhouse token yet, you're definitely missing out—but it's not too late!



“Innovation is taking two things that exist and putting them together in a new way.”

— Tom Freston

**Finished the journey?**

Let's make it unforgettable—grab one of the 3,000  
free NFTs waiting to be minted this week!



**The Shib** 

# The Shib