

The Shib

Community - Future & Tech - Fun

**BUILDING
IN WEB3**

WEB3 PRIVACY

**SHIBARIUM
DAPPSTORE, LIVE**

**SHIBARIUM
DAPPSTORE FAQ**



THESHIB075



EDITION SUMMARY

The Shib 75th edition:

Shiba Inu Builds

1. Shib Preview

Creation in Web3 Is Here: Tools, Talent, and Terrain

2. Shib Spotlight

Shibarium DappStore Goes Live, Welcomes Builders to Shib's L2 Network

3. Shib InFocus

Shiba Inu Opens Gateway for Developers to Build on Shib

4. Shib Deep Dive

Privacy in Web3: Buterin's Roadmap and Shiba Inu's Vision for a Confidential Future

5. Shib's Eye View

6 Key Shibarium Features Powering Shiba Inu's L2

6. Defogger

DappStore – Think App Store, But Make It Crypto (and Kinda Weird)

7. Shib Sensei

Shibarium DappStore:
Frequently Asked Questions

8. Doggy Bytes



GM Shib Army!



GM Shib Army, crypto degens, and the world!

We're excited to present the 75th edition, which features a special selection of informative stories that represent innovation and creativity in the Web3 space. In this issue, we invite you to explore the rapid emergence of creation in Web3, reminiscent of the innovations of the past. Discover how the current ecosystem, with all the available tools and strong community support, is nurturing a new generation of builders ready to transform the digital landscape.

Our Shib Spotlight feature reveals the star of this show: the official unveiling of the Shibarium DappStore by Shiba Inu. This curated platform for decentralized applications now welcomes developers from around the globe. The best part is, by opening the gates to global talent, Shiba Inu is fostering a collaborative environment where users and developers can come together to drive adoption and innovation.

"Build on Shib" is the latest battle cry from the frontlines. Our InFocus article provides insights into the newest attraction for developers, featuring quick tools, low transaction fees, and avenues to enhance the Shibarium network.

We also offer an in-depth exploration of privacy in Web3—what it means and how it's unfolding in the current landscape. What are the parallels and discrepancies in Vitalik Buterin's roadmap and Shiba Inu's FHE-driven approach through the Shib OS? Will these fundamental concepts converge somewhere down the line?

Our Shib's Eye View column provides a comprehensive breakdown of Shibarium's core features, highlighting enhancements such as faster speeds, lower fees, and Ethereum compatibility. As you read through this section, you'll see how these core functionalities streamline the experience for builders and ensure user satisfaction.

In another enlightening defogger, you'll have a better understanding of what a DappStore is and what this piece of crypto infrastructure does for our blockchain ecosystem. Explained in layman's terms, this article is a must-read for anyone seeking to uncover the potential of DappStores in the crypto space.

In another installment of Shib Sensei, we provide answers to your pressing questions about the Shibarium DappStore. Our aim is to equip you with the knowledge you need to navigate this digital storefront with ease and confidence.

And in a special feature in Shib Unpacked, we present a practical guide on how to build applications on Shibarium. Recommended for those who are looking to build or are already building innovative products on the layer 2 blockchain, we hope that this article can provide the necessary guidance to help you successfully bring your brilliant ideas to life.

Together, let's continue to work towards a future that embraces creativity, collaboration, and a decentralized ethos. ARE YOU READY TO BUILD?

Creation in Web3 Is Here: Tools, Talent, and Terrain

Explore the rise of creation in Web3, echoing historical innovation. Discover how fertile ground, open tools & ecosystem support empower builders today.



Creation in Web3 isn't a promise anymore—it's happening. After years spent laying the technical groundwork, the focus has shifted from infrastructure to action. Builders are stepping in, turning empty frameworks into thriving digital spaces.

But creation needs more than code; it needs tools, community, and support. This edition explores the moment Web3 moves from theory to reality—when vision meets velocity.

Beyond the Blueprint: Realizing Creation in Web3

Every grand structure begins with a [blueprint](#). But blueprints alone don't shelter people or power communities. They must be built upon, piece by piece, until real spaces take shape. The same is true for Web3.

Foundational layers—blockchains, protocols, decentralized storage—were designed with ambition. But their true value only emerges when people begin to create on top of them. The leap from architecture to activity marks the transition that defines creation in Web3 today.

This is the point where blueprints begin to breathe.

Creation in Web3 Echoes the Past

This moment is not without precedent. The early internet, stitched together by simple, open protocols like TCP/IP and HTML, offered a shared platform.

It invited builders of all kinds to [create](#). Websites, forums, applications, entire industries emerged—not because the infrastructure was complex, but because it was open.

Similarly, during the Industrial Revolution, standardized parts changed everything. Before, only specialists could assemble complex machines. But once interchangeable components and universal tools arrived, creativity scaled. Factories exploded in number. Invention became accessible.

Creation in Web3 is undergoing a parallel shift. When tools become intuitive and environments welcoming, more people start to build.



Enabling Environments for Web3 Creation

For any wave of creation to sustain itself, the ecosystem must do more than exist—it must invite. That means providing spaces where creators gather, share, and find [inspiration](#).

It also means offering the right tools: SDKs, APIs, platforms with clear documentation. These tools lower the barrier to entry.

They shift focus from foundational complexity to user experience and innovation. They turn solo effort into shared progress. Creation in Web3 flourishes when environments empower rather than intimidate.

From Solo Builders to Flourishing Ecosystems

Individual projects matter. But it's the connection between them—the collaboration, the remixing, the shared standards—that signal a mature ecosystem.

The rise of creation in Web3 can be seen in how communities allocate resources, highlight progress, and welcome [newcomers](#). It's about watching digital plots turn into public squares. It's about seeing the first signs of life in a newly seeded world.



Strategies for Cultivating Creation in Web3

Ecosystems don't thrive by accident. They require care and intentionality. Strategies for activating creation in Web3 include amplifying successful projects, offering consistent support, and maintaining a sense of collective mission.

Some of the most dynamic growth stems from visibility—when builders see what others have made and are inspired to contribute. Others arise from clarity—[clear rules](#), defined pathways, and dependable infrastructure.

[Creation in Web3](#) hinges on that delicate balance: giving just enough structure to guide, while staying open enough to allow surprise.

Where We Go From Here

This is an inflection point. Web3's fertile ground has been prepared. The early frameworks are in place. Now, it's up to the [builders](#).

Creation in Web3 means more than minting tokens or deploying contracts. It's about making spaces where people gather, tools that solve real problems, and networks that scale trust.

The blueprint phase is over. What comes next depends on who shows up—and what they choose to create.

Continue reading to explore the platforms, projects, and people breathing life into Web3's next chapter.

Shibarium DappStore Goes Live, Welcomes Builders to Shib's L2 Network

Shiba Inu officially launches the Shibarium DappStore, a curated hub for decentralized apps built on its L2 network — and throws open the gates for global developers to help shape its future.



A new chapter opens quietly — not with hype, but with architecture. The [Shibarium DappStore](#), a curated hub for decentralized applications, is now live. And with it, Shiba Inu begins turning a sprawling meme-fueled movement into something more structured: a working platform with open doors.

What began as a meme token has evolved into an ecosystem ambitious enough to take on Ethereum's growing pains. At the center of that effort is Shibarium, a Layer 2 blockchain designed to make apps faster, cheaper, and easier to build. The Shibarium DappStore is the latest addition — a storefront for that ambition, and a signal to developers around the world: the space is ready. Come build.

Inside the Shibarium Dapp-Store: A Gateway for Users and Developers

The Shibarium DappStore doesn't just offer convenience. It offers clarity.

On the surface, it looks like a simple portal. But the Shibarium DappStore, marks a deeper shift in how Shiba Inu wants its ecosystem to function — not just as a token-driven community, but as a platform built for builders.

It's a kind of town square for users: a curated space where decentralized apps live, vetted and built specifically for the [Shibarium Layer 2 network](#). It replaces guesswork with guidance, pulling verified projects into one place. No more hunting through Telegram threads or Discord tips to find which contracts are safe, or which tools are actually useful.

The Shibarium DappStore signals something more consequential for builders. Visibility, in crypto, is currency.

And here, listing a dApp means instant access to the SHIB Army — one of the most active and vocal communities in Web3. It means skipping the noise and standing in front of millions of potential users, instantly.

That kind of [exposure](#) is rare in the decentralized world, where most projects fight for traction. The Shibarium DappStore doesn't just display apps but also grants a stage. And for many developers, especially those launching from scratch, that can be the difference between obscurity and adoption.

Laying the Foundation: Why Shibarium Matters

To understand the DappStore's significance, you have to understand the terrain beneath it.

[Shibarium](#) was built to solve what Ethereum couldn't — namely, speed and cost. Like other Layer 2 solutions, it processes transactions off the main Ethereum chain, then reports them back. That means faster execution, dramatically lower fees, and a smoother experience for both users and builders.

It's EVM-compatible, too — meaning developers can use the same languages and tools they already know, like Solidity. There's no need to learn a new [playbook](#) to join.

In other words, the plumbing is already in place. The DappStore is just the storefront.



Building Tools for Builders: What's in the Kit

Beyond exposure, Shiba Inu is courting developers with a growing [suite of tools](#).

To effectively welcome builders, Shibarium offers more than just cheaper transactions. A suite of tools and ecosystem features are being promoted:

- **Developer Kits (SDKs):** Current offerings include ShibPay, Central Auth Service (CAS), Paymaster, and Identity, designed to simplify tasks like payments and user authentication. Future SDKs for oracles and storage are planned.
- **Unique Mechanisms:** Integration with the [ShibTorch](#) and the Shiba Inu Karma rewards system offer ways for dApps to tap into core community interests and engagement loops.
- **Security Focus:** Alongside standard blockchain practices, plans for Fully Homomorphic Encryption (FHE) integration signal an ambition towards advanced privacy features.

The quality, ease of use, and unique advantages of this toolkit compared to other L2 offerings will be critical in persuading developers to commit their resources to Shibarium.

Beyond Numbers: Tracking the Real Growth

Before the Shibarium DappStore's launch, the layer-2 network had already logged over [1 billion transactions](#), 175 million wallet interactions, and thousands of deployed smart contracts. But those numbers — impressive as they are — don't yet prove utility.

Average block time 5.01s	Completed txns 1.042B	Number of contracts today 5	Number of verified contracts today 6
Total accounts 249.894K	Total addresses 197.097M	Total tokens 10.453M	Total contracts 27.958K
Total BONE transfers 2.115M	Total tokens 15.006K	Total txns 1,053B	Total verified contracts 6.125K
Transactions (24h) 4.274M	Pending transactions (30m) 9.214K	Transactions fees (24h) 614.494 BONE	Avg. transaction fee (24h) 0 BONE

The Shibarium DappStore might change that. With visible listings, public metrics, and (eventually) independent analysis through TVL and user data, the community will be able to distinguish between raw activity and meaningful adoption.

The metric that will matter most isn't how many transactions fly through the chain. It's how many apps people actually use — and how many developers stick around long enough to build more.

A Crowded Market, A Singular Advantage

Shibarium isn't entering an empty field. It's up against battle-tested giants like Arbitrum, Optimism, Polygon, and [Base](#) — all of which offer fast execution, vast dApp libraries, and mature developer ecosystems.

But Shibarium isn't trying to win on speed alone. Its edge is cultural.

The SHIB Army isn't just a user base but a brand, a meme, a movement. If even a fraction of that energy is funneled into app adoption, community testing, and grassroots development, Shibarium may succeed where others have struggled: by converting passion into participation.

The Shibarium DappStore turns that possibility into infrastructure.

The Road to Real Adoption

There's no shortage of Layer 2's promising scalability and savings. But few arrive with millions already watching. And fewer still arrive with a narrative.

The Shibarium DappStore isn't just a tool but a test. It will show whether Shiba Inu's [massive community](#) can support a functional app economy, not just a speculative one.

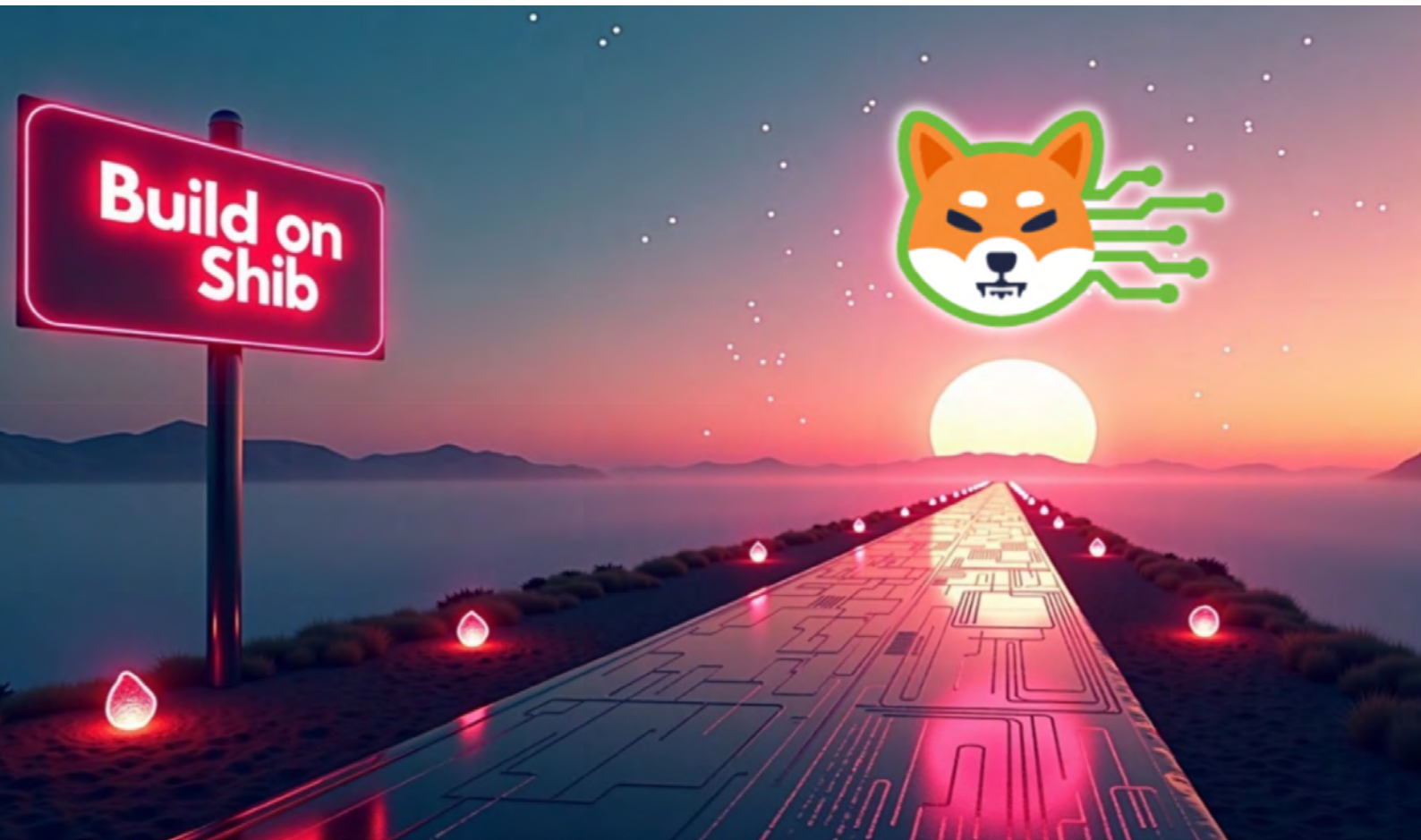
It will show if builders can be drawn in by more than hype. And it may prove whether the next great dApp will emerge from the shadows of a meme coin turned movement.

The doors are open. Now comes the building.



Shiba Inu Opens Gateway for Developers to Build on Shib

Shiba Inu launches a central page for developers to build on Shib, offering fast tools, low gas fees, and a gateway into the expanding Shibarium ecosystem.



There's a new signpost in the Shiba Inu ecosystem. Simple and unadorned, the message at the top of the new landing page reads: "Build on Shib." And that's exactly what it's inviting people to do.

Build on Shib Signals a Turn Toward Builders

The launch of the [DappStore](#) gives users a place to find verified applications. But for the ecosystem to thrive, it needs creators.

To that end, Shiba Inu has rolled out dedicated resources explaining the nuts and bolts of its Shibarium L2 network, essentially presenting its pitch for why developers should bring their projects on [Shibarium](#) instead of elsewhere.

Previously, developers keen on Shibarium navigated a maze of community channels, scattered code repositories, and unofficial guides. This new portal acts as a necessary consolidation, pulling those disparate threads together into one clean, direct destination.

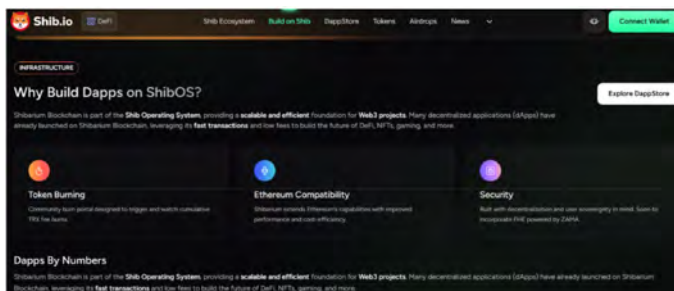
It lays out the essentials clearly: software development kits (SDKs) for smart contracts, network connection points (RPC endpoints), official documentation, and a framework for support. More than just organization, however, its launch signals a deliberate shift in tone – away from hype and squarely onto the creators building the tools and applications for Shibarium's future.

The Technical Pitch: Why Build on Shib?

Shibarium's technical pitch to developers highlights several key features designed to ease development and leverage the Shiba Inu ecosystem.

Compatibility sits at the forefront. Because Shibarium works with the Ethereum Virtual Machine (EVM), developers can often [migrate](#) existing projects or build new ones using familiar tools and languages, like Solidity, reducing the need to learn entirely new systems.

The network also emphasizes efficiency: low gas fees and high transaction throughput. This addresses common Ethereum pain points and makes Shibarium potentially more suitable for applications demanding frequent, low-cost interactions – think gaming, social media platforms, or active marketplaces.



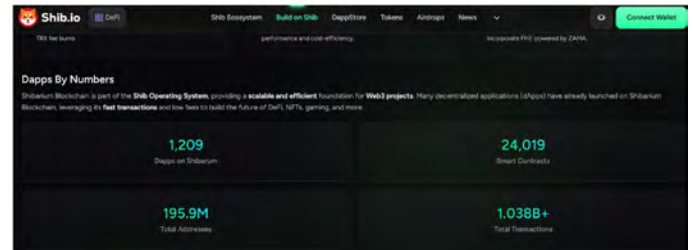
Beyond these core blockchain mechanics, Shibarium offers unique integrations. Its infrastructure supports specific token burn mechanisms accessible via the Shib Burn Portal, allowing developers to link their dApp's activity directly to Shiba Inu's tokenomics. Furthermore, developers can incorporate [Shiba Inu Karma](#), described as an on-chain system built to reward user activity and engagement within the ecosystem.

Looking ahead, the team has also pointed to planned advancements like Fully Homomorphic Encryption (FHE) through a collaboration with ZAMA. While not yet implemented, this signals an ambition to provide tools for building applications with enhanced privacy features.

Gauging the Landscape: Early Network Metrics

For developers considering where to invest their time and resources, existing activity matters. The Shibarium team points to early metrics as evidence of a growing network:

- **Applications:** Over 1,200 dApps reportedly deployed.
- **Code:** More than 24,000 smart contracts live on the chain.
- **Activity:** Transaction counts have pushed past the 1 billion mark.
- **Reach:** Unique wallet addresses interacting with [Shibarium](#) exceed 175 million.



These figures suggest a network that isn't starting from zero. While raw numbers don't always translate directly to deep engagement, they paint a picture of significant initial traction and a potentially large built-in user base for new applications. Developers looking to build on Shib are being shown a landscape that already has foot traffic.

The Invitation

Ultimately, the new developer resources serve as a detailed brochure. Shiba Inu is making its case: compatibility, speed, low fees, unique ecosystem ties like token burning and [karma rewards](#), plus emerging privacy tech. It complements the visibility offered by the DappStore with the foundational arguments for why building on Shibarium makes technical and strategic sense.

Shiba Inu has made its pitch. Not with slogans or speculation, but with code, access, and a page built for builders. The front door is open. What walks through now is up to the developers.

Privacy in Web3: Buterin's Roadmap and Shiba Inu's Vision for a Confidential Future

Buterin targets Ethereum's flaws as Shiba Inu maps out Shib OS and a future privacy layer—both chasing the same goal: privacy in Web3.



In the complex yet transparent world of blockchain, where every transaction is etched into the public ledger, the quest for privacy is a paradox. The open, transparent nature of Web3 promises greater security and trust, yet it leaves users vulnerable, their every action laid bare.

As the dream of privacy in Web3 remains elusive, Vitalik Buterin and Shiba Inu are charting separate, yet parallel, courses — both pushing toward the same goal: a blockchain future where privacy is no longer sacrificed at the altar of decentralization.

The Foundational Challenge to Privacy in Web3

Why is privacy such a persistent issue? Unlike traditional finance shielded by intermediaries, most blockchain interactions are public by default.

This hyper-transparency, while enabling verification, clashes sharply with user expectations of confidentiality. It makes users hesitant to transact sensitive data or engage in activities they prefer to keep private.

This lack of fundamental privacy in Web3 restricts the potential [applications](#) of blockchain technology, preventing its use in countless real-world scenarios that demand discretion.

Buterin's L1 Roadmap: Strengthening Baseline in Web3 Privacy

Buterin, Ethereum's co-founder, has long acknowledged the tension between privacy and transparency in Web3. His [proposed roadmap](#) aims to resolve this contradiction, enhancing Ethereum's privacy capabilities without altering its core principles. Buterin's approach is incremental, grounded in practical solutions that avoid disruptive changes while improving the user experience.

Buterin has emphasized that while privacy is crucial to Ethereum's future, it must be balanced with the transparency that defines blockchain technology.

His roadmap prioritizes user experience and integration:

- **Seamless Private Payments:** Integrating existing tools (like Railgun, Privacy Pools) into standard wallets is key. "Users should NOT have to download a separate 'privacy wallet'," Buterin stressed, advocating for intuitive "shielded balance" options.
- **Decoupling User Activity:** To break the chain linking all of a user's actions, Buterin suggests encouraging separate addresses per application. This aims to "remove public links between all of your activity," facilitated by making self-funding transactions private by default.
- **Securing Off-Chain Interactions:** The roadmap also extends to off-chain privacy. Metadata leaks—often an overlooked facet of blockchain privacy—are addressed by Buterin's plan to utilize Trusted Execution Environments (TEEs) and Private Information Retrieval (PIR) protocols, securing off-chain data and ensuring users' activity remains private.



- **Protocol-Level Support:** Implementing L1 upgrades (like FOCIL, EIP-7701) and proof aggregation helps make privacy-enhancing protocols more robust, censorship-resistant, and cost-effective.

Buterin's plan focuses on elevating the privacy baseline inherent in Ethereum L1 itself.



Shib OS Vision: Layered, FHE-Powered Privacy in Web3

While Buterin addresses the L1 foundation, Shiba Inu's strategy, embodied in its broad [Shib OS framework](#), emphasizes building specialized privacy solutions on higher layers using cutting-edge cryptography:

- **Dedicated Privacy Layer (L3):** Central to this vision is a planned FHE-Powered Execution Rollup (Layer 3). This aims to be an optimistic rollup running atop the [Shib Alpha Layer](#) (an L2 component) using Fully Homomorphic Encryption (FHE) for private transaction execution, settling back to [Shibarium](#) (the primary L2).
- **Optional L2 Privacy:** Shib OS also features [FHE Shibarium Transactions](#), allowing users to opt for FHE-enhanced privacy directly on the Shibarium L2.
- **FHE for Identity and Verification:** The [FHE-Powered Identity Stack](#) plans to use FHE for verifiable credentials and private KYC. This is further supported by the Shib Attestation Service, also leveraging FHE for creating secure, privacy-preserving on-chain attestations related to reputation and identity.
- **Encrypted Communications & Storage:** Complementary components like HUB Messaging (using River protocol with FHE) and Encrypted Personal Data Storage (IPFS-based, self-custodial) further reinforce the focus on user confidentiality within Shib OS.

This multi-pronged approach within Shib OS showcases a deep investment in FHE as a core technology to deliver enhanced Privacy in Web3 across identity, transactions, execution, and communication, primarily on layers built atop the foundational L1.

Shiba Inu's Shib OS approach, particularly its heavy reliance on FHE for its future L3 and identity systems, represents a bet on specialized, advanced cryptographic techniques implemented on higher layers.

FHE offers powerful theoretical guarantees (computation on [encrypted data](#)) but is computationally intensive and still maturing for widespread blockchain use. This approach aims for potentially stronger privacy guarantees within its specific ecosystem, layered above the L1 baseline.

The Future of Privacy in Web3: A Layered Approach

Buterin and Shiba Inu's strategies, though distinct, share a common goal: to offer users a safer, more private Web3 experience. The reality of privacy in Web3 is that no single solution will suffice.

Instead, the future of privacy in this space will likely rely on a layered approach, where foundational enhancements to Ethereum's [Layer 1 privacy](#) are complemented by specialized, privacy-focused solutions in higher layers.

Buterin's work on Ethereum is crucial. His roadmap offers foundational improvements to ensure that privacy is integrated directly into the Ethereum network, establishing a baseline for all future transactions. By focusing on making private payments seamless and user activity unlinkable, Ethereum can provide robust privacy while maintaining its core strengths in decentralization and censorship resistance.

At the same time, Shiba Inu's Shib OS presents a more specialized approach — building privacy into Layer 3 with cut-

ting-edge encryption technologies like FHE. This strategy opens up new possibilities, not just for [privacy](#), but for creating a whole new layer of trustless, confidential applications that run on the Shiba Inu ecosystem.

Together, these approaches suggest that Web3's privacy problem is best solved not by one solution, but by many, tailored to different needs and use cases. As both Ethereum and Shiba Inu continue to advance their privacy features, the Web3 ecosystem will begin to take shape not just as a decentralized, transparent system, but as one that respects and protects user privacy.

A New Era for Privacy in Web3

In the coming years, privacy in Web3 will be tested and redefined by efforts like Buterin's and [Shiba Inu's](#). As both ecosystems evolve, the focus will shift from transparency as a virtue to the balance of openness and confidentiality. The public nature of blockchain will still be its foundation, but privacy will become its cornerstone.

This dual approach—foundational improvements to Layer 1 privacy alongside specialized, higher-layer encryption solutions—might just be the answer to making Web3 not only decentralized but secure in a way that respects individual privacy.

The future of Web3 privacy is not just in what can be seen, but in what remains hidden.



WEB 3.0

6 Key Shibarium Features Powering Shiba Inu's L2

Faster speeds, lower fees, ETH compatibility, token burns & more – a quick look at the core Shibarium features aiming to make this L2 more than just hype.



The [Shibarium DappStore](#) is live and the big question is: what's actually under the hood of Shiba Inu's Layer 2? Is it just a fresh coat of paint on the meme machine, or are there actual gears turning that matter? The Shiba Inu crew insists it's the real deal, built with purpose.

So, okay, let's break it down. Shibarium isn't just some wannabe L2 crashing the party.

It is engineered with some killer Shibarium features specifically designed to make life awesome for builders, keep you users happy, and seriously level up the whole Shiba Inu ecosystem.

You want the lowdown? Here are the six big moves it's packed with:

1. Speed & Cost Savings: Core Shibarium Features

First things first: Ethereum L1 can feel like crawling through mud wearing concrete boots, with gas fees to match. [Shibarium](#) fixes that.

Shibarium is built for speed – think near-instant transactions (less thumb-twiddling) – and fees that won't make you weep or require selling a kidney. Seriously, using apps here feels smooth.

These core Shibarium Features mean less waiting, more doing. It works as advertised, so, using apps on Shibarium should feel way smoother and less like highway robbery.

2. Speaks Fluent Ethereum (EVM Compatibility)

Calling all devs! You know all that Ethereum code you've perfected? Bring it over.

Shibarium is EVM compatible, meaning your existing Solidity skills, tools, and even dApps can plug right in. No need to go back to school.

In non-nerd speak, it means they can use the same tools, programming languages (like Solidity), and probably even chunks of existing code to [build on Shibarium](#).

Shibarium made it easy so you can get straight to building the next big thing.

Less time relearning, more time shipping. Makes it easier to tempt builders over.



3. Security Minded (With a Side of Future-Proof Privacy)

All right, real talk on security and privacy. Yeah, yeah, everyone says they care.

But check this: Shibarium is not just talking the talk. Down the road, Shiba Inu is gearing up to plug in some serious boss-level tech – Fully Homomorphic Encryption (FHE), courtesy of our brainy pals at ZAMA.

Think of it like this: doing math on locked treasure chests without ever needing the key. Total privacy power-up.

It's a big lift, it's on the roadmap and when it lands? [Game changer](#) for keeping your business your business on-chain.

Just, y'know, don't hold your breath for tomorrow – good stuff takes time.

4. Feed the Flames! (Automatic SHIB Burn)

You asked, Shibarium delivered. The Shibarium network has that sweet [Shib Torch](#)—SHIB token burn mechanic humming along automatically.

A piece of the transaction fees gets permanently zapped out of existence.

Less supply floating around... well, you know the vibes. It's built-in, running 24/7 with network activity. Burn baby burn — an exclusive Shibarium feature.



5. Shiba Inu Karma Rewards

Time to earn those points! The Shib Inu Karma system is now active, rewarding folks for actually using the ecosystem.

Users rack up Shiba Inu Karma Points for doing stuff like swapping tokens, adding liquidity, maybe grabbing Metaverse land or minting NFTs. Think of it like a [blockchain](#) frequent flyer program that's actually flying.

What the points unlock might still evolve, but leaderboards are up and it's a clear way the ecosystem gives a nod to active participants right now.

6. Dev Tools & SDKs: Essential Shibarium Features

Can't expect developers to build cool stuff without tools. Shibarium's offering some Software Development Kits ([SDKs](#)) as essential Shibarium Features to give builders a leg up.

Available now are kits for payments (ShibPay), user verification (Central Auth Service), flexible gas payments (Paymaster) and digital ID (Identity). More are promised.

Decent tools make building less of a headache, which is always welcome in the dev world.

That's the core gear Shibarium's packing right now: serious speed, fees that won't bankrupt you, that comfy EVM playground you already know, plus a growing SDK toolbox to get you started [faster](#). Tack on unique ecosystem plays like the SHIB burn and the live Karma system keeping the community engaged.

The bottom line? The stage is set.

It's a solid foundation for building cool dApps without the usual Layer 1 migraines. The tools are ready, the network's humming, and the community's eager to see what drops next.

So, quit lurking in the Discord – dive into the docs, grab the SDKs and actually ship something. Get your project listed in the DappStore.

Time to build. Let's see what you got.



DappStore – Think App Store, But Make It Crypto (and Kinda Weird)

What exactly is a DappStore? It's Web3's answer to app discovery, part curated catalogue, part ecosystem hub – let's defog this crucial piece of crypto infrastructure.



So, Shiba Inu just flipped the switch on the Shibarium DappStore, right? Suddenly this term pops up, sounding suspiciously like the app store on your phone but shrouded in crypto mystique.

It arrives promising a gateway to decentralized apps on the Shiba Inu Layer 2, but what does that actually mean for users and devs? Is a DappStore just a fancy list, or is there more going on under the hood?

Time to unpack this essential, sometimes confusing, piece of the Web3 puzzle.

The Fog

You whip out your phone, tap the [App Store](#) or [Google Play](#) icon, and boom – millions of apps at your fingertips. [Games](#), banking, social media, that weird cat photo editor you downloaded once.

It's slick, organized, and mostly works. Easy peasy.

Then you wander into Web3, hear about this new DappStore, and things get... foggier. Is it the same deal? Do you download crypto apps that magically appear on your phone?

Sort of, but not really. The term sounds familiar, but the reality involves blockchains, decentralization (sometimes), and a whole different set of rules. Let's clear the air.

What's a dApp Again? Quick Refresher

Before hitting the store, remember what we're shopping for. "Dapp" stands for Decentralized Application.

Unlike your standard apps run by one company on their servers, dApps live on a blockchain (like Ethereum, Solana, or, y'know, [Shibarium](#)). They often use smart contracts – bits of code that automatically do stuff when certain conditions are met – and try to put more control in the hands of users, sometimes involving tokens for governance or utility.

Think decentralized finance tools (DeFi), NFT marketplaces, blockchain games, that kind of jazz.

Clearing the Fog: What a DappStore Actually Does

Right, so a DappStore is basically a curated catalogue, a digital storefront, specifically designed to showcase and provide access to those dApps built for a particular blockchain ecosystem. Apple has its walled garden; Shibarium now has its own curated patch within its DappStore.

Why create these specific stores instead of just letting dApps run wild? Well, navigating the raw blockchain to find usable [dApps](#) can feel like trying to find a specific weapon drop in Diablo by randomly clicking through every monster on the map.

It's chaotic. DappStores bring some much-needed order to the decentralized chaos:



• Discovery: Finding Needles in Haystacks

Blockchains are permissionless. Anyone can deploy a [smart contract](#) or dApp.

That's cool, but it also means the landscape gets cluttered fast with thousands of projects – some genius, some half-baked, some outright scams. Finding something specific and useful can be a nightmare.

Block explorers show you everything raw, which is overwhelming. A DappStore acts like a curated quest log or a filtered map – it points you toward applications the store runners (usually the core blockchain team) think are worth checking out on their specific network. It narrows the field dramatically.

• Ecosystem Hub: The Town Square Effect

A good DappStore becomes more than just a list; it acts like the central hub or town square for that blockchain's ecosystem. It shows off what's popular, what's new, what the community is buzzing about.

It helps create a sense of place and shared activity. Seeing a bustling store gives users and [developers](#) confidence that things are actually happening on that chain.

It's a sign of life, a focal point that helps build network effects – more users attract more devs, who then build more apps, thus attracting more users, and so on.

• Developer Spotlight: Getting Seen

Imagine spending months coding the most amazing decentralized game ever, only to launch it into the void where nobody knows it exists. That's the reality for many Web3 builders. Getting traction is tough.

A DappStore offers [developers](#) a direct line to the most interested audience possible: the people already using that specific [blockchain](#). Getting listed means visibility, a chance to stand out from the noise, and access to potential users actively looking for things to do on that network.

It's like getting your indie game featured on the Steam front page instead of buried on page 5,000.

• Curation: The DappStore's Sketchy Filter (Hopefully)

Let's be real: Web3 can be the Wild West. Rug pulls, buggy code, vampire contracts draining your wallet – it happens.

The DappStore model usually involves some level of curation. The team behind the store reviews applications before listing them.

Now, this isn't a bulletproof guarantee – DYOR (Do Your Own Research) is still your mantra. But the idea is to filter out the most obvious scams and technically broken junk.

Think of it like a shopkeeper who at least tries to avoid selling exploding potions. It's a layer of attempted quality control, offering a potentially safer starting point than clicking random links on Twitter. Shibarium, for example, makes devs apply via a form – that's curation in action, a key function of the Shibarium DappStore.

The Catch: Decentralization's Little Irony

Here's the slightly awkward part. Web3 is all about decentralization, right?

Power to the people, no single point of control? Well... most DappStores are run and curated by the central project team behind the blockchain. They decide the listing criteria, they approve or reject applications, they control the front page.

It's a practical compromise. A totally open, uncurated store would quickly become unusable, filled with spam and scams.

Curation makes it safer and easier to navigate. But it absolutely introduces a layer of centralization and potential bias.

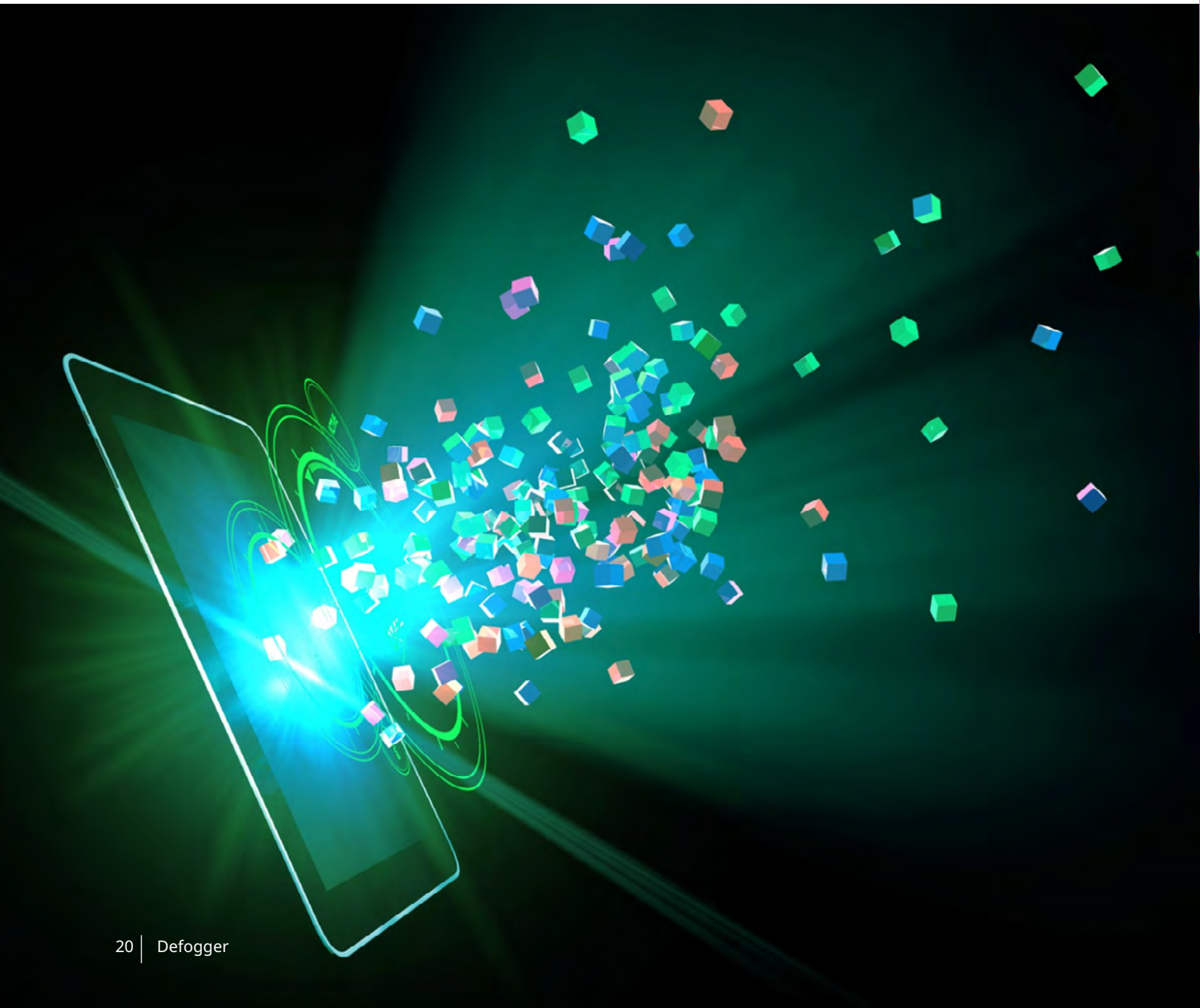
It's one of the many areas where the lofty ideals of Web3 bump up against the messy realities of user experience and safety when implementing something like a DappStore.

The Takeaway

So, a DappStore isn't just your phone's app store ported to the blockchain. It's a specialized catalogue for finding decentralized apps on a specific network like Shibarium.

It aims to make discovery easier, offer some level of safety through curation (buyer still beware!), act as a central hub for the ecosystem, and give developers a much-needed spotlight.

It's a key piece of infrastructure for any blockchain trying to move beyond just having a token to having a living, breathing world of applications – even if it comes with a side of centralization irony. Now you know the deal with the DappStore concept.



Shibarium DappStore: Frequently Asked Questions

Your guide to the new platform showcasing apps on Shiba Inu's Shibarium network, the Shibarium DappStore.



Frequently Asked Questions

Shiba Inu recently launched the Shibarium DappStore. It's a place to find applications built on their Shibarium blockchain. Here are answers to common questions about it.

Q: What is the Shibarium DappStore?

A: It is an online directory. It lists decentralized applications (dApps) that developers have built using the Shibarium Layer 2 [blockchain](#), which is part of the Shiba Inu ecosystem.

Q: Why was the Shibarium DappStore created?

A: It was created to showcase the projects being built by third-party [developers on Shibarium](#). It acts as a central place to find and learn about these applications.

Q: Who is the Shibarium DappStore for?

A: It's for users looking to discover dApps built on Shibarium. It's also for developers who want to list their Shibarium projects and gain visibility within the Shiba Inu community.

Q: How can developers get their project listed in the Shibarium DappStore?

A: [Developers](#) can submit their project details using an online form provided by the Shiba Inu team. The link is: <https://forms.gle/224AqbiDvAA74JUu5>

Q: What are the potential benefits for listed projects?

A: Projects listed in the Shibarium [DappStore](#) might get promoted by the Shiba Inu team. This could include features on Shib.io, in their newsletter, magazine, or social media channels.

Q: What benefits does Shibarium offer developers?

A: Shiba Inu states that Shibarium offers:

- Compatibility with Ethereum.
- Low transaction fees (gas costs).
- Fast transaction speeds.
- Built-in SHIB token burning mechanisms.
- Shiba Inu Karma [rewards](#) system for users.
- Security features, with plans for FHE integration via ZAMA.

Q: What tools are available for building on Shibarium?

A: Shiba Inu provides Software Development Kits (SDKs) to help developers. Available [SDKs](#) include ShibPay (payments), Central Auth Service (validation), Paymaster (gas fee options), and Identity. More SDKs are planned.

Q: Where can I visit the Shibarium DappStore?

A: You can find the Shibarium DappStore online at: [Shib.io/dapps](https://shib.io/dapps)

Q: Where can developers find resources to build on Shibarium?

A: Developer resources, including documentation and SDKs, are available at: [Shib.io/build](https://shib.io/build)

DOGGY BYTES

Welcome to your sunny corner in the crypto universe! Things are looking up a little bit, and we're here to highlight some uplifting trends and exciting updates from the ecosystem over the past week.



BEST OF SHIB



The Best of SHIB presents a curated selection of the most exciting news, biggest trends, and unforgettable highlights from across the vibrant Shiba Inu ecosystem. It showcases the top moments, groundbreaking developments, and community achievements that make SHIB, BONE, LEASH, TREAT, Shibarium, and other Shiba Inu initiatives so dynamic. Readers get a dose of pure SHIB positivity!



Bone ShibaSwap analytics

Addresses by Holdings

• \$0 - \$1k	• \$1k - \$100k	• \$100k+
95.94%	4.01%	0.05%

Whale Holdings

• Whales	• Others
50.14%	49.86%

Addresses by Time Held

• Cruisers	• Traders	• Holders
11.49%	1.04%	87.47%

We're kicking off this section with some exciting news for Shibizens! Over the past week, BONE's [price jumped nearly 12%](#). When BONE traded at \$0.2765 on Tuesday, its 24-hour trading volume also reached \$5.16 million. This is a 24.54% increase from the previous week. The Shib Daily reported that BONE whales—those with holdings exceeding \$100,000—control roughly half of the total supply.

Credit: CoinMarketCap

Speaking of whales, data from IntoTheBlock recently revealed a [95.91% increase in large transactions](#). This suggests that whales may be accumulating or offloading tokens, which consequently leads to speculation about an impending price shift.

Bone ShibaSwap analytics

Addresses by Holdings

• \$0 - \$1k	• \$1k - \$100k	• \$100k+
95.94%	4.01%	0.05%

Whale Holdings

• Whales	• Others
50.14%	49.86%

Addresses by Time Held

• Cruisers	• Traders	• Holders
11.49%	1.04%	87.47%

Credit: CoinMarketCap

SHIB IN NUMBERS

Welcome to SHIBA INU in Numbers, your weekly source for positive insights into the Shiba Inu ecosystem! Each week, we highlight the key metrics and milestones for SHIB, BONE, LEASH and TREAT, focusing on price appreciation and other positive developments. We also track the exciting progress of Shibarium, Shiba Inu's Layer-2 scaling solution, bringing you key stat . Plus, we shine a light on the growth of Shib Torch.

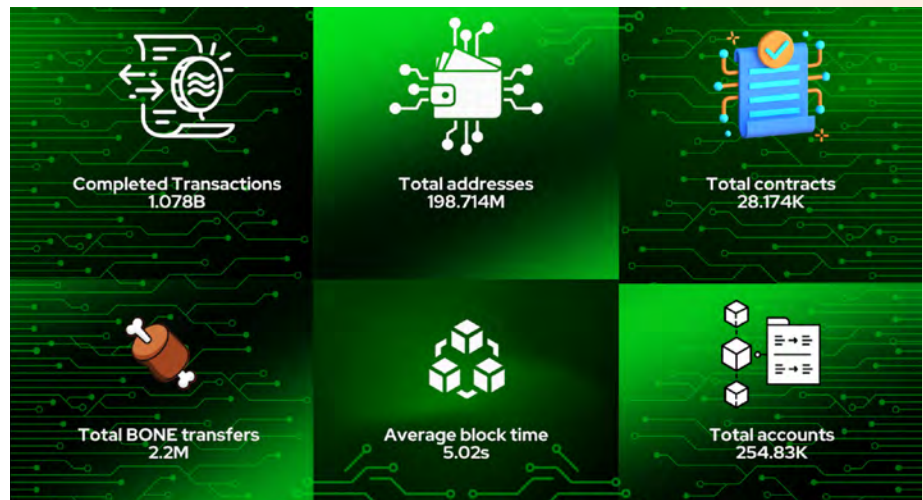


SHIBARIUM

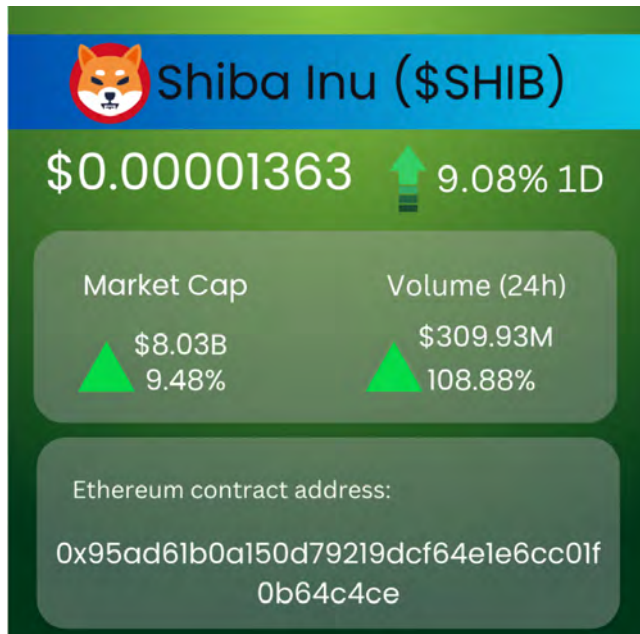
Shibarium's statistics as shown in this report reveal a consistently growing layer 2 blockchain environment. As of Wednesday, the number of completed transactions has increased exponentially from 1.044 million in our last report to 1.078 billion—a mind-boggling increase of over 100%.

Total addresses created on the chain have grown modestly from 197.27 million to 198.714 million, while the number of total contracts rose to 28.174 thousand from 27.989 thousand as noted in our last report.

BONE transfers have seen a moderate increase of about 3.8%, from 2.121 million to 2.2 million. The number of overall user accounts currently stands at 254.83 thousand, representing a growth of about 1.98% in comparison to data in the previous report.



SHIBA INU ECOSYSTEM TOKENS



As of 6:27 a.m. ET on Wednesday, SHIB has experienced a positive shift, with its price climbing 9.08% to \$0.00001363, illustrating renewed momentum among traders.

The token's 24-hour trading volume saw a 108.88 surge%, reaching \$309.93 million, which indicates a surge in trading activity and interest.

The market cap also increased by 9.48% to \$8.03 billion, emphasizing SHIB's vital role in fueling the ecosystem's expansion.



Data recorded for Shiba Inu Treat (TREAT) as of 6:28 a.m. ET on Wednesday indicates a remarkable rise in the token's value. It traded at \$0.003530, a 9.60% increase within a 24-hour period.

Meanwhile, the trading volume surged by 14.73% to \$2.86 million, indicating that more participants are actively exchanging TREAT.

The market capitalization also expanded by 9.60% to \$3.21 million, which reflects a broader recognition of its utility within the Shib ecosystem.

As of 6:28 a.m. ET on Wednesday, Bone ShibaSwap (BONE) experienced notable gains across multiple metrics: its price has increased by 15.61% to \$0.3196, while the 24-hour trading volume rose to \$8.4 million—a massive 59.29% increase.

Furthermore, the market cap has grown by 15.61% to \$73.49 million, indicating a broader investor confidence in BONE's importance within the Shiba Inu ecosystem.



Monday morning recorded remarkable growth for Doge Killer (LEASH) in terms of price and market cap. LEASH traded at \$161.17 at 6:29 a.m. ET on Wednesday, reflecting a 18.25% increase from the previous day.

The significant increase in market cap to \$17.14 million, matching the price rise, underscores LEASH's growing prominence.

Its 24-hour trading volume of \$1.62 million at the time of reporting, up by 2.54%, indicates active engagement and growing market confidence.

ShibTorch 🔥

Total Burned
911,969,069 SHIB

5.47% ↑
from last week

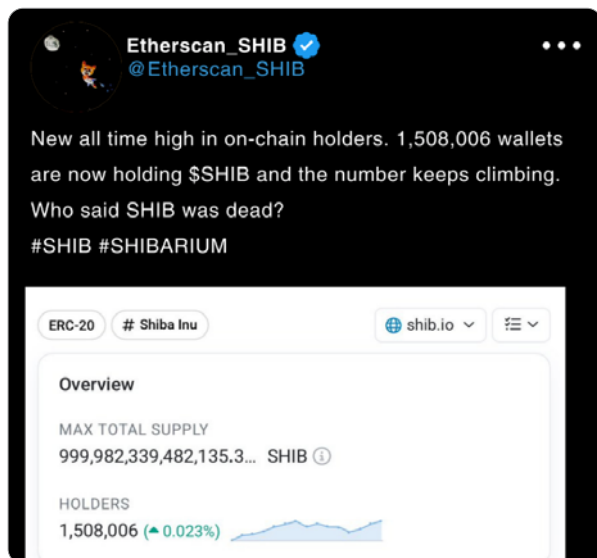
SHIB BURN

With an impressive 911,969,069 SHIB burned as of Wednesday, reflecting a 5.47% rise from last week, the Shib Army is demonstrating the transformative impact of community-driven token burns. By participating in the ShibTorch burn portal, holders can actively reduce the supply of \$SHIB while championing participation in important efforts to drive the ecosystem forward.

Come together and take action—use the burn portal and contribute to the long-term value of our beloved token!

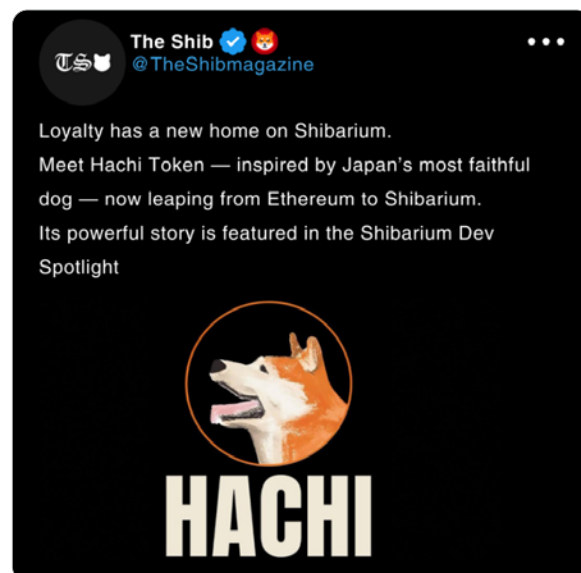


TOP *Dogs*

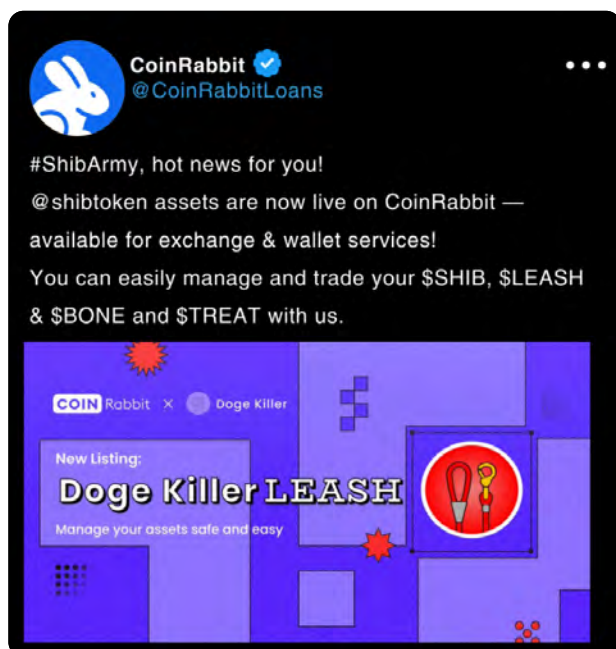
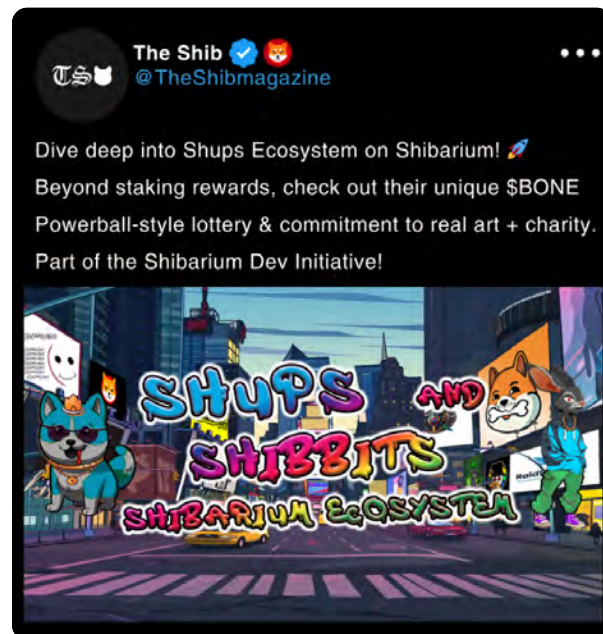


Wow, \$SHIB recently hit an all-time high with over 1.5M wallets holding the token—proof that SHIB is stronger and more popular than ever!

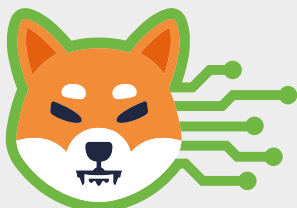
Celebrate the incredible journey of Hachi, inspired by Japan's most faithful and beloved pup, as you read its incredible story in the latest Shibarium Dev Spotlight feature! Click [here](#) to know more.



Another Shibarium Dev Spotlight feature: the Shups Ecosystem! Don't forget to read about how they're transforming engagement with their unique lottery, focus on authentic art and charity, and their active participation in Shibarium's development.



All four Shiba Inu ecosystem tokens are now available on CoinRabbit! You can now manage your Shib assets on the platform—it's safe and easy.

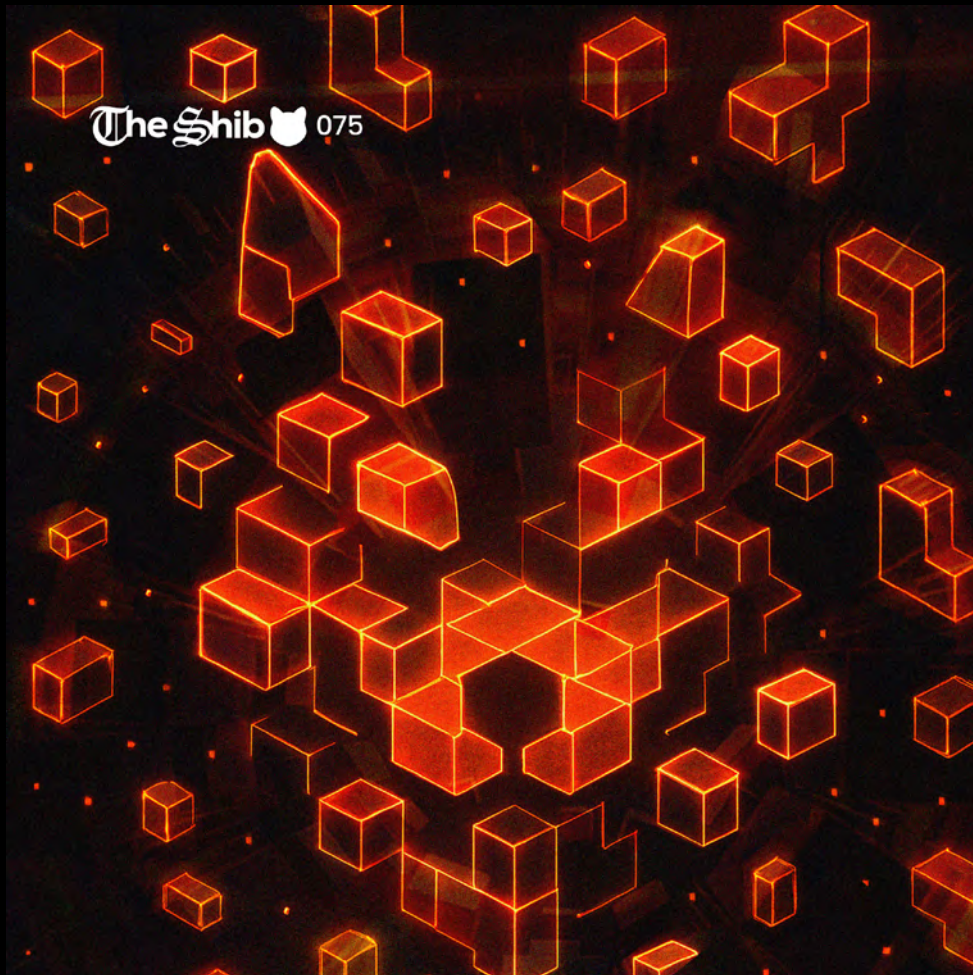


"Good marketing turns tech into a tale, and crypto needs more of that storytelling magic."

— Anndy Lian

Finished the journey?

Let's make it unforgettable—grab one of the 3,000
free NFTs waiting to be minted this week!



The Shib 

The Shib