

The Shib

Community - Future & Tech - Fun

**MISSING LINK
FOUND**

**SHIB ALPHA
LAYER**

**BUILDER'S
BREAKTHROUGH**

**ALPHA
DECODED**



THESHIB079



EDITION SUMMARY

The Shib 79th edition:

SHIB SUPER LAYER

1. Shib Preview

Web3 Interoperability Breakthrough:
Ending the Era of Digital Babel

2. Shib Spotlight

Web3 Has a New Brain: Shib Alpha Layer

3. Shib InFocus

Shib Alpha Layer Ignites a New Era for
Web3 Builders

4. Shy Speaks

Shib Alpha Layer and its Big Swing at Web3
Interoperability

5. Defogger

Shib Alpha Layer: No More Headaches, Just
Working Web3

6. Shib Sensei

Shib Sensei Explains the Big Deal with Shib
Alpha

7. Doggy Bytes



GM Shib Army!



For years, Web3 has felt like a brilliant blueprint taped together with duct tape. Dazzling dApps, lightning-fast chains, clever contracts—but ask them to speak the same language and the system starts stuttering.

We’ve been building Babel, not bridges.

That’s starting to change.

In this 79th edition of *The Shib*, we’re diving into the quiet revolution of Web3 interoperability—the push to stitch together the scattered parts of this ecosystem into something coherent. It’s not flashy. It’s foundational. And it’s finally gaining momentum.

From new frameworks that aim to sync networks like neighborhoods, to builders focused less on hype and more on function, something’s shifting. The spotlight isn’t just on what individual chains can do—but how they connect, and why that connection matters more than ever.

We call this edition *Alpha Evolved* because that’s what’s happening. The era of isolated innovation is giving way to something smarter: systems that speak, sync, and scale—together.

Let’s unpack it.

Web3 Interoperability Breakthrough: Ending the Era of Digital Babel

A quiet shift is underway in Web3, as builders turn from hype to Web3 interoperability—paving the way for systems that finally work together.

Web3 interoperability is the quiet buzz running through the internet these days. Not the usual noise—the memes, the price charts, the protocol drama—but something deeper. A growing tension between everything Web3 has built and everything it still can't quite do.

On the surface, the ecosystem looks like a marvel. Networks everywhere. Apps doing things nobody thought possible five years ago. But dig a little deeper, and the cracks show. [Wallets](#) that won't talk to each other. Bridges that feel more like toll booths. Chains with their own languages,

rules, and rituals—like ancient city-states dressed in modern code.

It's not hard to see the resemblance to Babel. Everyone building upward, higher and faster. But the connections between them? Weak. Messy. Sometimes nonexistent.

Web3 Interoperability: A Familiar Problem Wearing New Clothes

We've seen this before, just in different forms. In medieval Europe, merchants crossed into new territories carrying satchels full of foreign coins and handwritten letters of credit.

One border crossing could mean a fresh round of taxes, translations, and negotiations. Trade happened, sure. But it limped along.

Even the early railroads couldn't get it right. Different regions used different track gauges. Trains couldn't cross.

Goods had to be unloaded and reloaded at every junction. Progress got tangled up in its own design choices.

The same thing's happening now with Web3 infrastructure. Early chains blazed trails, no doubt.

But moving between them still feels like jumping tracks—wallets reset, fees stack up, assets get wrapped and unwrapped like matryoshka dolls.

It's friction. And it's starting to wear people down.

The Next Step Isn't Flashy—It's Functional

Lately, there's been a shift. Less hype, more focus.

Less "what can we build" and more "how do we make this all work together." The attention is turning toward integration.

Not the sexy kind, maybe. But the kind that [quietly changes everything](#).

People don't want to carry five wallets or learn a new interface just to use a different app. They don't want to worry about whether their ETH is native, bridged, or stuck somewhere.

They just want it to work. Seamlessly. Predictably.

The builders in the space seem to get that. They're not chasing the tallest tower.

They're laying down roads. Building underpasses. Trying to fix the weird, silent problem that keeps Web3 from being truly usable: [fragmentation](#).

There's still a long way to go, of course. And some teams are still building in silos, heads down, convinced their protocol will be the one to rule the rest.

But a growing number are starting to think differently. They're not looking to dominate—they're looking to connect.

What Comes Next for Web3 Interoperability

This isn't just a technical shift. It's a mindset one.

A slow, necessary turn toward usability, accessibility, and actual scale. Not in some abstract "mass adoption" sense, but in a real-world way—where someone new to the space can move through it without a translator and a guide.

The age of digital Babel hasn't ended. But some people are finally working on the grammar book.

And that might be what changes everything.





Web3 Has a New Brain: Shib Alpha Layer

The Shiba Inu ecosystem unveils the Shib Alpha Layer, a new "Super Layer" built on Shibarium. It promises to end Web3's "Digital Babel" with a unified experience, instant transaction finality, and a no-bridge architecture for a new generation of interconnected applications.

Shiba Inu has introduced the Shib Alpha Layer — a "Super Layer" decentralized engine promising to unify blockchain's fragmented landscape and revolutionize Web3 coordination.

For a while now, Web3 has felt like a body with powerful limbs — fast chains, brilliant apps — but no central nervous system. A promising future, yes, but clunky in practice. Moving between blockchains often feels like sending your funds through a series of pneumatic tubes and hoping they don't get lost in transit. Too many wallets. Too many gas tokens. Too much friction.

Today, the Shiba Inu introduces what it believes is the missing piece: the Shib Alpha Layer — a coordination layer, a "Super Layer," designed to act like a new brain for [Web3](#).

This new layer isn't just another component. It's built to bring order to blockchain's chaos by allowing decentralized apps to communicate, transact, and scale in harmony — all while preserving speed, security, and simplicity.

Solving the Puzzle of Web3 with the Shib Alpha Layer

The vision for a unified decentralized web has long remained just out of reach. Developers and users alike have struggled to navigate a Digital Babel — a sprawling maze of chains, [bridges](#), and [token ecosystems](#), each speaking its own dialect.



You find a promising DeFi tool on one chain, a game on another. Moving between them involves juggling wallets, navigating complex bridges, and managing different fee tokens. For everyday users, it's often more headache than it's worth.

The Shib Alpha Layer is designed to make that all just work. A seamless, click-and-go experience, more like Web2 — but powered by decentralized technology.

How the Shib Alpha Layer Powers Next-Gen RollApps

The Shib Alpha Layer, at its core, acts as the intelligent sequencing and coordination hub for a new generation of applications called RollApps — decentralized apps built on scalable rollup architecture.

A modular rollup abstraction layer for ultra-fast transactions, achieving sub-100ms finality and high TPS to power a global network state.

The mission behind the Shib Alpha Layer is to bring more users to Web3 by eliminating transaction barriers and delivering an experience as intuitive as using an app on your phone.



No-Bridge Architecture and Unified Gas Token

Among the Shib Alpha Layer's most transformative ideas is its No-Bridge Architecture — an attempt to eliminate the awkward handoffs between apps on [different chains](#).

Inside this Super Layer, the goal is that RollApps won't require separate bridges or tokens to talk to each other. Instead, users interact across applications as if they're all part of one seamless system.

The Treat token will serve as the native gas token within the Shib Alpha Layer — simplifying transactions and reducing the need to constantly swap or acquire multiple tokens. Meanwhile, underlying settlements will still happen on Shibarium, leveraging its low-cost Layer 2 architecture and using [BONE](#) as its base gas token.

This setup combines familiar user interfaces with invisible infrastructure improvements, reducing both cost and complexity.



Sequencing, Speed, and Censorship Resistance

Behind the scenes, the Shib Alpha Layer is powered by a decentralized sequencing layer, built using the Cosmos SDK — referred to internally as "Elder" technology.

Think of it like an air traffic control system for the digital world: before any transaction happens, the Alpha Layer organizes and bundles transactions into super blocks, then distributes them to RollApps using optimistic rollup technology (op-stack based). Summaries of these blocks are then committed to Shibarium for finality.

This structure enables two major breakthroughs:

- **Instant Confirmations:** The system promises ~2 second inclusion finalities, giving users the kind of real-time feedback expected from [modern apps](#).
- **Censorship Resistance:** Because sequencing is decentralized, RollApps can't arbitrarily block user transactions. This ensures fairness and trust — especially critical for financial or gaming applications.

HOW DEVELOPERS BENEFIT FROM THE SHIB ALPHA LAYER



Instant User Adoption

Lower Operational Overhead



EVM Compatibility

Liquidity Fusion



How Developers Benefit from the Shib Alpha Layer

Beyond usability, the Shib Alpha Layer was built with developers in mind. It offers:

- **Instant User Adoption:** RollApps can tap into the existing Shibarium user base.
- **Lower Operational Overhead:** Core services like mempool RPCs and sequencing are managed by the Alpha Layer.
- **EVM Compatibility:** Developers can port existing Ethereum dApps easily thanks to the op-stack infrastructure.
- **Liquidity Fusion** — a mechanism intended to make liquidity across RollApps feel unified, so users don't need to worry about where their assets reside. It's one pool, one experience.

And looking ahead, the Alpha Layer is preparing to integrate advanced privacy features like Fully Homomorphic Encryption (FHE) — allowing computations on encrypted data without exposing sensitive information.

The Shib Alpha Layer and the Future of Web3

The Shib Alpha Layer doesn't just aim to solve technical inefficiencies — it aspires to reshape how we think about digital life in a decentralized world.

Just as Visa once unified disparate payment rails under one network, the Alpha Layer wants to unify the digital assets and apps of Web3 — making them accessible, composable, and finally coherent.

It's a bold move — but one grounded in design, scalability, and purpose. If successful, the Shib Alpha Layer won't just be a protocol — it'll be the cognitive center of a smarter Web3, one where the parts finally add up to something greater than the sum.

As this Super Layer comes online, the world will be watching.

Because for the decentralized web to truly grow, it needs not just limbs — but a mind.

How ShibDAO Works: The Tech Running Shiba's New Engine

Built on Shibarium and designed for speed, flexibility, and better UX, the Shib Alpha Layer is drawing DeFi devs, GameFi creators, NFT curators, and AI innovators to reimagine what's possible onchain.



The Shib Alpha Layer doesn't whisper. It calls out. To coders, to creators, to anyone who's ever stared at a gas fee and thought, we can do better.

It's not just another Layer 3. Shib Alpha Layer feels like a response to every frustration builders have voiced over the past few years: the cost, the clutter, the clunky onboarding, the siloed liquidity. Now, it offers something different — a stitched-together space that's faster, friendlier, and finally starting to feel like a foundation you can build on, not around.

Let's break it down.

From Chaos to Clarity: How Shib Alpha Layer Streamlines Web3

DeFi, in its [current form](#), can feel like building a rocket with duct tape — powerful, but unstable. Speed, cost, and composability are constant friction points. The Shib Alpha Layer addresses these directly.

With its op-stack-based RollApps and native “Instant Confirmations,” the platform is optimized for complex financial protocols. Whether you're building a DEX, a yield strategy, or something stranger, transaction throughput and finality won't drag you down. Liquidity, too, is treated differently — the Alpha Layer introduces a “Liquidity Fusion” mechanism aimed at dissolving the silos that trap capital in isolated pools.

Each RollApp can be tailored for specific needs — gas policies, execution environments, oracles — giving developers more than a plug-and-play chain. They get [control](#).

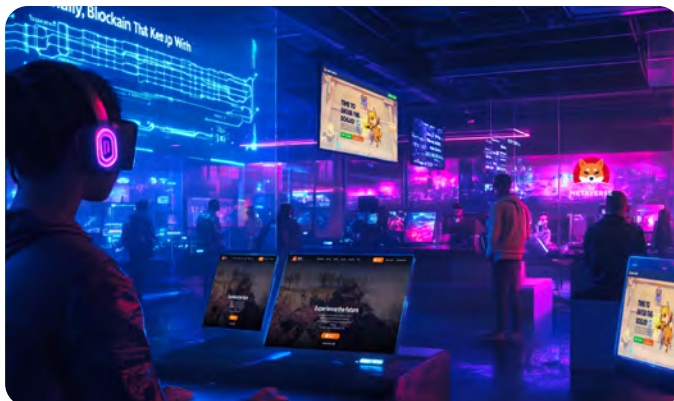


Finally, Blockchain That Keeps Up With Play

Web3 games and metaverse platforms have always run into the same wall: blockchain just wasn't built for constant, tiny, seamless interactions. The [Shib Alpha Layer](#) changes the calculus.

RollApps allow game devs to build high-throughput, ultra-low-latency environments where actions — like trades, loot drops, or avatar updates — don't require waiting 20 seconds or paying \$2. It's not just about speed. It's about preserving immersion.

The ecosystem's attention to onboarding and user experience also gives indie devs and major studios alike a chance to skip the wallet confusion and focus on player flow. Shibarium's existing user base offers a ready-made audience for titles looking to break out.



No Gas Wars, No Guesswork: NFTs on the Shib Alpha Layer

The NFT world has been defined by hype and heartbreak — gas wars, slow mints, and confusing bridges that lose users along the way. The Shib Alpha Layer smooths out those edges.

Creators launching RollApp-based [NFT](#) marketplaces can expect fast confirmations and lower costs, which means faster time-to-market for new collections and more dynamic trading experiences for collectors. With Treat acting as the native gas token and a no-bridge architecture, the process from discovery to mint feels more like browsing Spotify than configuring a router.

It's not just smoother — it's cleaner. Less friction means more time for culture to do its thing.



A Playground for the Unpredictable: AI Meets Shib Alpha Layer

The ecosystem isn't just courting traditional categories. The Shib Alpha Layer directly calls out AI-powered dApps and bleeding-edge tools that don't yet have a perfect home in Web3.

Why? Because AI and on-chain don't always get along. The Alpha Layer's architecture — designed for modularity, privacy (with future FHE support), and cross-RollApp interaction — creates an ideal sandbox for AI agents that interact with decentralized data or autonomous smart contracts.

If your dApp needs room to think, adapt, or grow into something unanticipated, this might be where it happens.

It's a sandbox with a strong spine.

No Pitch. Just Possibility.

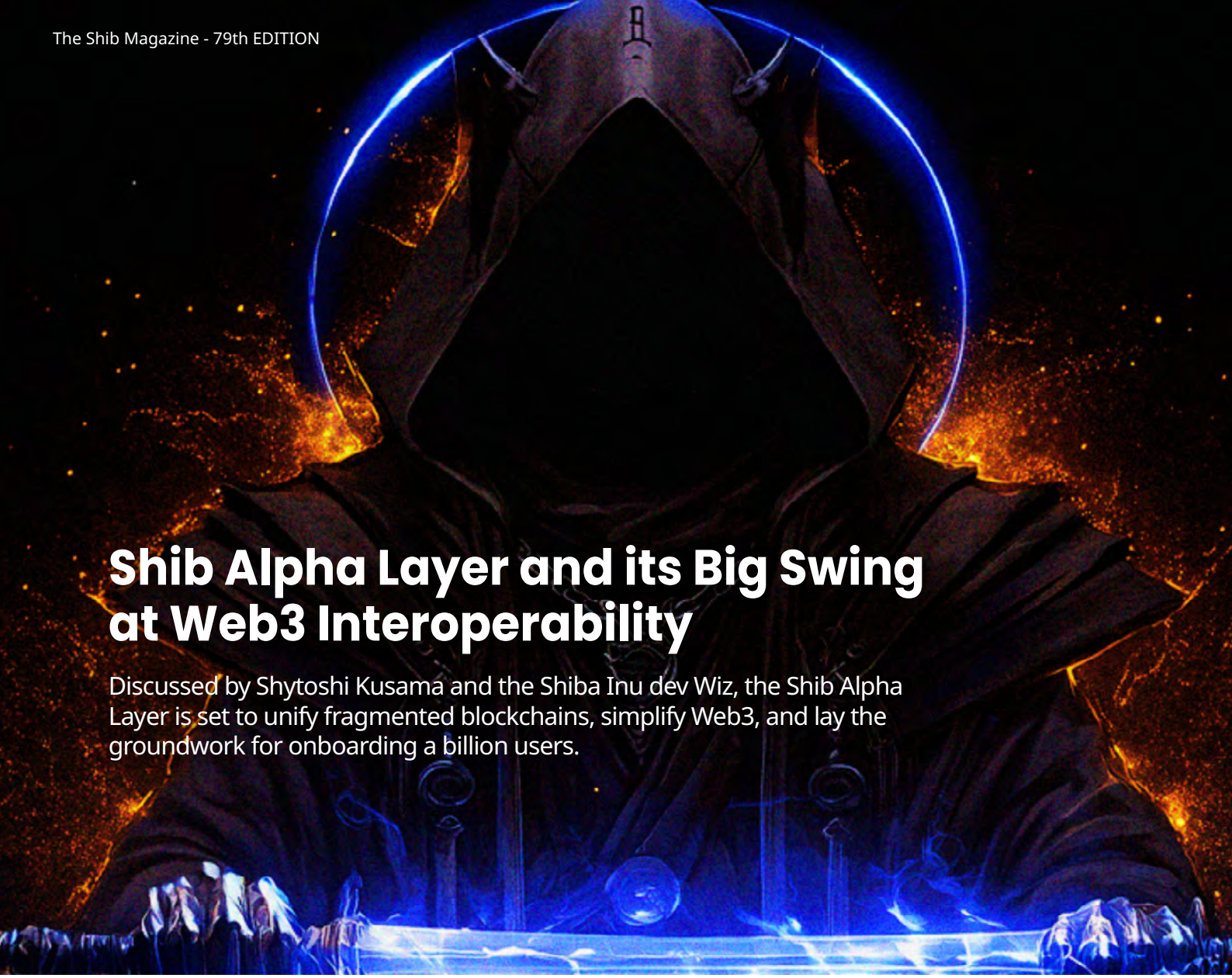
The Shib Alpha Layer doesn't posture. It doesn't sell dominance or disruption. It offers something rarer in Web3: room to build without compromise.

This isn't a rigid blueprint — it's a responsive foundation. Not a command, but a challenge: What could you create if the constraints fell away?

By dissolving long-standing pain points — fragmented liquidity, clunky onboarding, slow confirmation — Shiba Inu isn't just sketching the next phase of Web3. It's laying the groundwork for it.

The Shib Alpha Layer is permissive by design. It doesn't dictate form or function. It hands you the tools and gets out of the way.

For those ready to shape what comes next, the canvas is wide open. And this time, the ground is solid enough to run — maybe even fly.



Shib Alpha Layer and its Big Swing at Web3 Interoperability

Discussed by Shytoshi Kusama and the Shiba Inu dev Wiz, the Shib Alpha Layer is set to unify fragmented blockchains, simplify Web3, and lay the groundwork for onboarding a billion users.

In a charged and revealing episode of "Shy Speaks Shib," anticipation surged—not just for what was said, but for what it could unlock.

Lead ambassador Shytoshi Kusama, alongside core developer Wiz, didn't just talk tech—they unveiled the blueprint for what may become Web3's next evolution: the Shib Alpha Layer.

A modular, chain-abstracted infrastructure, the Alpha Layer is designed to unify fragmented blockchain experiences and create a seamless foundation for developers, users, and entire ecosystems to build on SHIB.

The Shib Alpha Layer isn't some far-off fantasy or vague teaser anymore. It's an initiative—and by the sound of it, a working one. In a podcast episode that started with a personal message from Kusama to the community, the Shiba Inu lead ambassador wasted no time handing the mic to Wiz, a Shiba Inu developer deep in the build, to talk through what they're actually doing. And what they're doing, if you take them at their word, is aiming straight at the core issue dogging crypto: fragmentation.



What Is the Shib Alpha Layer Trying to Solve?

"If you look at the current model of blockchain," Wiz said, pausing like someone who's explained this a hundred times before, "it's highly fragmented." He wasn't sugarcoating anything.

Too many chains. Too many wallets. Too many hoops just to move from one place to another. "It's really, really not convenient."

His analogy was blunt but effective: Web3 today is like the world before the [App Store](#). You had to chase down each app, each wallet, each interaction.

But imagine, he said, a setup like Apple's—one ID, one entry point, one experience. That's the dream. And that's the job of the Shib Alpha Layer.

In plain terms, it's a system that makes everything underneath it—multiple rollups, chains, balances—feel like one [unified space](#). "You just connect to Alpha Layer," Wiz explained. "It has all these rollups running together... you just need one wallet, one balance."

Kusama summed it up cleanly: "So really, it's an account abstraction layer... it's just one entry point."

Wiz agreed, refining it: "More like chain abstraction... rollup abstraction. You don't even care which rollup is there."

The Tech Behind the Simplicity

So, what exactly is going on under the hood? The Shib Alpha Layer is built around RollApps—applications running on rollup

tech, which itself is a kind of [Layer 2 solution](#). The idea is that these apps inherit the security of their base layer, like Ethereum, but run faster and cheaper.

And here's where it gets interesting: all of these RollApps settle their data on Shibarium, which in turn settles on Ethereum. That makes Shibarium more than just an L2—it becomes a data availability layer. That, in turn, boosts the utility of SHIB's ecosystem token, Bone.

"It's like an umbrella," Wiz said, sketching it in [metaphor](#). "Each rollup is different, but they all nest under Alpha."

And there's another twist—privacy. The Shib Alpha Layer integrates FHE (Fully Homomorphic Encryption), a bleeding-edge cryptography method developed in partnership with Zama.

It means developers can spin up RollApps with serious, built-in privacy features. Think quantum-level encryption for apps that need it.

"That's the beauty of what we've built," Shytoshi added. Developers can choose exactly what they need from the stack. It's [modular by design](#).

Shib Alpha Layer: Access, Scale, and the Billion-User Question

When asked how users and developers would access the Shib Alpha Layer, Shytoshi pointed to the token economy. TREAT, he said, will be one way in—and not the only one. That opens up room for other tokens to plug in too, which makes the whole thing more adaptable.

But scale is where things get really ambitious. Wiz put it plainly: the complexity of Web3 is killing adoption. "People won't move unless it's convenient."

Shytoshi sees the Alpha Layer as the rails for that convenience. Not just for crypto users, but for businesses and maybe even governments. Each one could have its own rollup, all quietly running under Alpha, all settling to Shibarium.

"That," he said, "is how we onboard the next billion users."

The Shib Alpha Layer is a big swing at an even bigger problem. It is already out in the wild, still early, still growing—but the ambition is hard to ignore. It's not another hype cycle dressed in jargon. It's trying to chip away at a real issue: how do you make Web3 usable for people who aren't already knee-deep in it?





Shib Alpha Layer: No More Headaches, Just Working Web3

With no-bridge architecture, one gas token, and privacy tech on the horizon, the Shib Alpha Layer is here to smash crypto's UX nightmares and make Web3 finally act like it's ready for real people.

Crypto's constant "how does this even work?!" moments might just be hitting a turning point, because the Shib Alpha Layer is stepping onto the scene with a bold promise: to take the headache out of Web3 and finally make things just work.

You've heard the other big words: "Super Layer," "RollApps," right? And then they drop this bomb: "No-Bridge Architecture" for the Shib Alpha Layer and a single gas token called Treat. Plus, whispers of something called FHE making everything super private.

Remember Crypto Hell Level 1: The Wallet Juggle?

You've been there. You want to try [Cool DeFi App A](#). It needs Wallet X and Token Y for gas. Then you spot Shiny Game B. Whoops! That's Wallet Z and Token Q. Before you know it, your desktop looks like a digital hoarder's nest, you've got 17 browser extension wallets, and you're pretty sure one of them ate your dogecoin.

This, my frens, is what the [Shib Alpha Layer](#) is taking a big ol' sledgehammer to.



Enter Shib Alpha Layer: Your Universal Remote for Web3 Apps (Kinda)

Think of all those different apps (they're calling them "RollApps" in this new setup) as different TV channels. In the old Web3, each channel needed its own weird, specific remote control, and maybe even a different type of battery. Annoying, right?

The Shib Alpha Layer wants to be your new, slick universal remote.

The "No-Bridge Architecture" bit? That's the magic. Imagine all those channels are now magically part of the same cable package. You don't need to rewire your house (bridge your assets) every time you want to switch from the "DeFi Adventure Hour" to "[NFT Bonanza](#)."

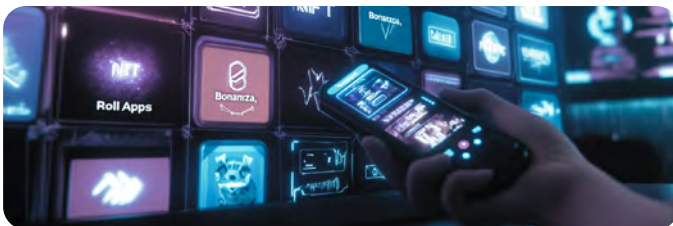
The idea is that applications built inside the Shib Alpha Layer ecosystem can talk to each other and you can move between them (or they can interact on your behalf) without those gut-wrenching "ARE MY TOKENS GONE FOREVER?!" moments that bridging often brings. It's aiming to make the experience feel more like, well, using apps on your phone. They just... work. Together.

And What's This "Treat" Token Thing? Is it Edible?

Probably not edible (don't try it, we're not liable).

But if the Shib Alpha Layer is the universal remote, Treat is aiming to be the one type of battery that powers it for a lot of your interactions on that layer. You know how gas fees are the little payments you make for doing stuff on the [blockchain](#)?

Instead of needing a pocketful of different weird crypto coins for every single RollApp you touch within the Shib Alpha Layer, the plan is for Shiba Inu Treat to handle those "Alpha Layer specific" interaction costs.



"But wait!" you cry, keyboard warrior that you are. "What about BONE and Shibarium?!"

Easy there, champ. Shibarium is still the Layer 2 highway these RollApps are built on.

And BONE is still the fuel for that highway. The Shib Alpha Layer, with [Treat](#), is like a super-efficient toll pass and traffic management system on top of that highway, making your journey between different destinations (RollApps) way smoother.

You pay Shiba Inu Treat for the convenience of the Alpha Layer's services, while the big stuff still settles on Shibarium using [BONE](#). See? Layers. Like a delicious, complicated tech lasagna.

Okay, Okay, But WEN FHE? That Super Secret Privacy Stuff?

Ah, yes, Fully Homomorphic Encryption. The tech that sounds like it was named by a wizard.

It basically means doing math on secret stuff without ever un-secreting the secret stuff. Mind. Blown. The Shib Alpha Layer peeps say it's in the works, aiming to let you build RollApps with next-level privacy.

So, wen [FHE](#)? The official word, whispered on the digital winds (and confirmed by devs), is SOON.

You know how it is in crypto. It'll get here when it gets here, probably right after your favorite influencer promises a 100x. But it's on the roadmap, and that's pretty spicy.



So, What's the TL;DR for My Normie Brain?

Shib Alpha Layer, with its "No-Bridge" thingy and the Shiba Inu Treat token, wants to:

- Stop the [Wallet](#) & Token Madness: Fewer different wallets and weird gas tokens to juggle when you're using apps inside its house.
- Make Moving Around Less Scary: Less "bridging," which means less chance of your precious digital stuff getting lost in the crypto void.
- Feel More Like the Normal Internet: Click. Do thing. Thing happens. No 12-step program involving three bridges and a blood sacrifice.
- Get Super Private (Eventually): FHE is coming. Soon. Ish.

Is it going to be perfect from day one? Probably not, this is crypto, things break, devs cry, we all buy the dip.

But is it a giant leap away from the current user-unfriendly dumpster fire that parts of Web3 can be? Absolutely.

So next time you hear "No-Bridge Architecture," just think: "less crypto headaches." And that, my friends, is a Treat indeed. (Sorry, still had to.)



Shib Sensei Explains the Big Deal with Shib Alpha

The Shib Alpha Layer buzz is real, and your Shib Sensei is here to cut through the noise, offering clear answers to what this game-changing "Super Layer" truly means for you and the future of Web3.

A new dawn breaks over the Shiba Inu ecosystem, and with it comes a name echoing through the digital plains: the Shib Alpha Layer. Questions bloom like spring sakura, and your Shib Sensei is now holding court, ready to illuminate the path and unravel the mysteries behind this ambitious new frontier in Web3.

Greetings, seekers of Shib-dom. The winds of innovation carry fresh whispers, and the name on many lips is the Shib Alpha Layer. I hear your inquiries, the thoughtful ponderings of a community eager to understand. Fear not the complexity, for true wisdom lies in clear understanding.

Many of you have asked for clarity on this "Super Layer," its purpose, its mechanics, and what it truly signifies for our journey into a more connected and seamless Web3. Consider this session a calm clearing in the forest of information. Let us walk through these common questions together, so that the path ahead, with the Shib Alpha Layer lighting the way, becomes distinct and comprehensible for all.

Here are your pressing questions, answered.

Q: What exactly is the Shib Alpha Layer in simple terms, Sensei?

A: Ah, a fine question to begin our journey. Envision the Shib Alpha Layer, young seeker, as a new and intelligent guiding system, thoughtfully constructed upon Shibarium – our ecosystem's Layer 2 path. Its noble purpose is to bring harmony and ease to your use of many different decentralized applications, or "RollApps." Think of it as a wise elder, or a "Super Layer" if you will, ensuring all parts of our digital village work together, without the common vexations of today's Web3.

**Q: How does the Shib Alpha Layer differ from Shibarium, Sensei? Are they not one and the same path?**

A: A keen distinction to make. Shibarium is the strong, foundational Layer 2 road, built to carry much traffic with greater speed and lesser toll than the great Ethereum highway. The Shib Alpha Layer, however, is a more refined network of expressways and intelligent intersections built atop this Shibarium road. It uses Shibarium for its ultimate grounding and security but adds a distinct layer of sophisticated organization, specifically to manage and enhance your experience with a new generation of Layer 3 "RollApps." Consider Shibarium the bedrock, and the Shib Alpha Layer the finely crafted architecture built upon it.

Q: You speak of "RollApps," Sensei. What are these, and what is their dance with the Shib Alpha Layer?

A: "RollApps," in their essence, are specialized decentralized applications, crafted using the clever technique of "rollups." This technique bundles many small actions into one larger, more efficient one, much like a scroll combines many teachings. The Shib Alpha Layer is designed as the nurturing ground, the primary dojo, for these RollApps. It provides them with shared wisdom, easier access for all seekers, and allows them to interact more harmoniously within its embrace.

Q: Many whispers speak of a "No-Bridge Architecture" for the Shib Alpha Layer. What does this mean for our journeys, Sensei?

A: Indeed, this is a most welcome whisper. In the current lands of Web3, crossing from one application-realm to another often requires treacherous "bridges" – complex, sometimes slow, and occasionally perilous paths for your digital valuables. The Shib Alpha Layer's "No-Bridge Architecture" seeks to transform these into smooth, open pathways within its own domain. The aim is for you to move between different RollApps under its guidance as if they are all part of one harmonious village, without the need for these arduous external crossings.

Q: Shib Sensei, the currents speak of Shiba Inu Treat and our steadfast BONE. How do these energies flow within the Shib Alpha Layer?

A: The flow of value requires clear pathways and proper tribute. As project scrolls indicate, Shiba Inu Treat is intended as the native token for your direct interactions within the Shib Alpha Layer itself – the offering for passage, if you will, when using its unique coordinating services. This simplifies your journey, as you may not need a different coin for every RollApp path you tread within this Layer.

Meanwhile, our steadfast BONE continues its vital role as the lifeblood of the underlying Shibarium Layer 2. It is there, on Shibarium, that the great ledger of all RollApp activities is settled. Thus, Treat facilitates your ease on the Alpha Layer's express routes, while BONE fuels the foundational Shibarium highway. Each has its purpose in this evolved design.

Q: The term "decentralized sequencer" is mentioned with the Shib Alpha Layer. Why is this significant, great Sensei?

A: Ah, the order of things is paramount. A "sequencer" is like the village elder who wisely orders the queue for the communal well, ensuring fairness and efficiency before the RollApps draw their water. Many such elders in other lands operate alone, a single point of wisdom, but also of potential imbalance. The Shib Alpha Layer's sequencer, powered by technology known to its smiths as "Elder" and built with the transparent scrolls of the Cosmos SDK, is decentralized. This means a council of trusted, independent guardians oversees the order, ensuring no single voice can unjustly silence another or block the path to the well. This fosters great trust and resilience.





Q: We hear of advanced magic called FHE, Sensei. What is this, and what role will it play in the Shib Alpha Layer?

A: FHE, or Fully Homomorphic Encryption, is indeed a profound and somewhat mystical art. Imagine being able to count the coins in a locked chest without ever needing the key to open it. FHE allows for calculations on information that remains veiled in secrecy. The Shib Alpha Layer carries the intention to weave this powerful magic into its fabric in due course. This could allow builders to craft RollApps where your activities and treasures remain exceptionally private, shielded from prying eyes. It is a promise of future strength, a path still being paved.

Q: Wise Sensei, for whom is the Shib Alpha Layer truly intended? Will simple travelers like myself find use for it?

A: The Shib Alpha Layer extends its hand to two main gatherings:

- * Firstly, to all seekers like yourself, wishing for a simpler, less costly, and more unified passage through the wonders of Web3 – be it in realms of finance, games, or digital artistry. The aim is for your journey to feel as intuitive as a well-known path.

- * Secondly, to the skilled artisans and architects (developers and RollApp Operators), offering them a strong, adaptable, and resource-efficient ground upon which to build their innovative creations, with easier ways to welcome fellow travelers and a broader community to connect with.

As its gates open, all will find their way to the RollApps nurtured within.

Q: When can we expect to walk these new paths of the Shib Alpha Layer, Sensei?

A: Patience, young one, for great things require careful crafting. The forges have been glowing, and the initial paths (on test networks) have been trod by the builders. Word from the inner council suggests that a public beta, where all may glimpse its early wonders, will arrive "very soon." Keep your ear to the wind and heed the official pronouncements from the Shiba Inu ecosystem for the precise timing of this unveiling.

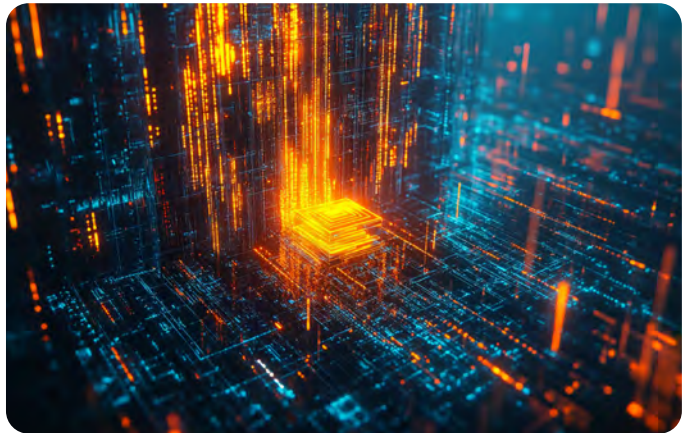
Q: The ambition is to welcome a billion souls to Web3. How does the Shib Alpha Layer help achieve this, Sensei?

A: A noble question. The path to welcoming the masses is paved not with complexity, but with intuitive ease. The current Web3 often presents a thorny thicket to newcomers. By striving to simplify the journey – a single feeling of account and fee, no treacherous bridges, swift responses – the Shib Alpha Layer aims to clear this thicket. As the developer Wiz wisely noted, "convenience is the thing." By offering this profound convenience, it seeks to open the main gates of Web3, making it inviting for the countless who currently stand outside.

And so, as the moon completes its cycle and the first light of understanding touches the horizon, our exploration of the Shib Alpha Layer for today draws to a close. These answers, like smooth stones gathered from a clear stream, are here to provide a steady footing on your path through the evolving landscape of our digital domain.

Remember, the Shib Alpha Layer is more than mere code; it is a testament to the community's persistent drive for innovation, a thoughtful response to the cacophony of a fragmented Web3. It is an invitation to build, to connect, and to experience a decentralized world that is not only powerful but also welcoming and intuitive.

The journey of "Alpha Evolved" has just begun. Keep your mind open, your questions sharp, and your spirit aligned with the pursuit of knowledge. For in understanding these new tools, we empower ourselves to shape the future we wish to inhabit. Until our paths cross again, walk with wisdom.



DOGGY BYTES

Welcome to Doggy Bytes — your weekly shot of Shiba Inu vibes, where every token tells a story and every move counts.

We're talking record-breaking milestones and the top dogs of Shibarium making serious waves.

SHIB just hit an all-time high in holders and the Shib Army isn't here to play — we're here to lead. Meanwhile, over in Shibarium territory, the charts are lighting up.

From growing adoption to blazing fast Layer 2 action, the Shiba ecosystem is firing on all cylinders. Momentum? We've got plenty. Community? Stronger than ever.

Strap in, fam — the runway's just getting started. Let's sniff out the biggest moments and see what's next.



BEST OF SHIB

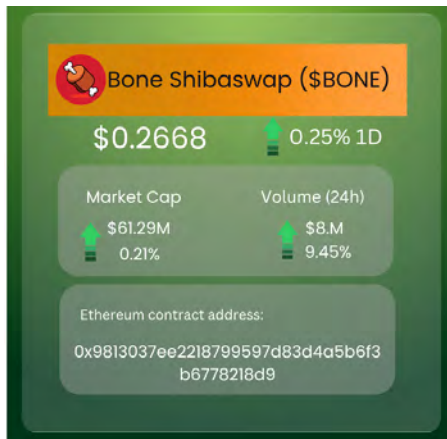
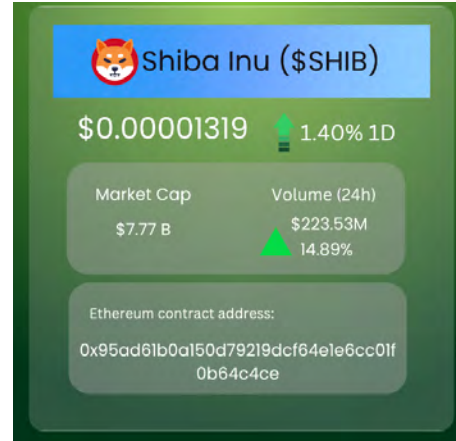
The Best of SHIB presents a curated selection of the most exciting news, biggest trends, and unforgettable highlights from across the vibrant Shiba Inu ecosystem. It showcases the top moments, groundbreaking developments, and community achievements that make SHIB, BONE, LEASH, TREAT, Shibarium, and other Shiba Inu initiatives so dynamic. Readers get a dose of pure SHIB positivity!



SHIBA INU ECOSYSTEM TOKENS

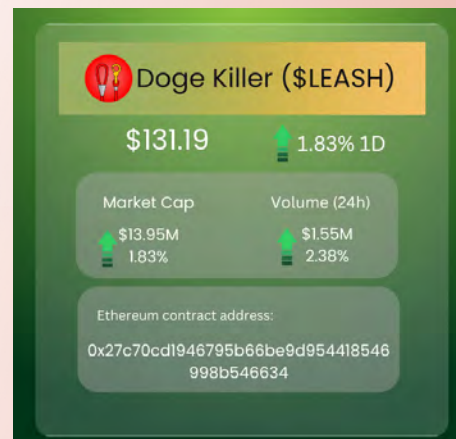
Let's talk tokens — the lifeblood of the Shiba Inu ecosystem. From the OG bark of \$SHIB to the sharp bite of \$BONE, each one has its own role in keeping this decentralized pack running wild. Whether it's utility, governance, or pure meme power, these tokens are more than just names — they're part of the heartbeat of the Shib Army.

Shiba Inu (SHIB) is on the move, trading at \$0.00001319 — up 1.40% in the past 24 hours. Daily volume is up 14.89%, hitting \$223M, with a market cap of \$7.77 billion. SHIB's momentum is building. The Doge-killer's still got bite!



Doge Killer (LEASH) is creeping up, now at \$131.19 — up 1.83% in the past 24 hours. Daily volume is up 2.38%, hitting \$1.55M, with a market cap nearing \$14M. LEASH is showing fresh signs of life. The silent wolf is stirring!

Bone ShibaSwap (BONE) is making moves, now at \$0.2669 — up 9.23% in 24-hour trading volume, hitting \$8M. Price is up 0.25% on the day, showing signs of fresh interest. BONE's got a pulse — and it's picking up!



ShibTorch 🔥

Total Burned
1,254,539,419 SHIB

1.79% ↑
from last week

SHIB BURN

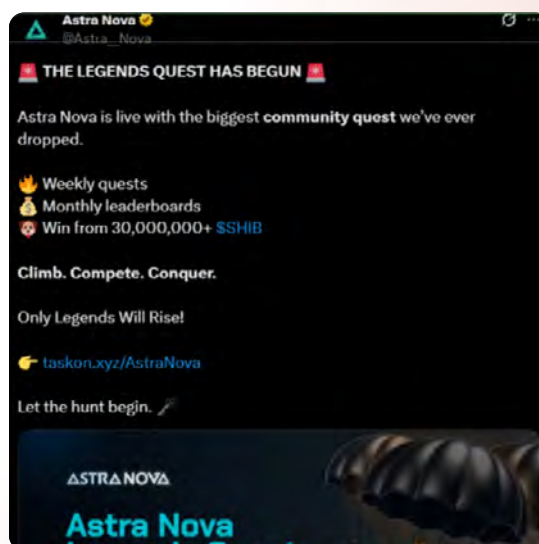
The Shib Torch keeps burning bright—1,254,539,419 SHIB sent to the dead wallet so far, marking a 1.79% increase from last week. The supply's shrinking, the flames are rising, and the ShibArmy's not letting up. The path to scarcity is 🔥—who's ready to fuel the next burn?



TOP *Dogs*

The Shiba Inu community is always buzzing with energy, and our Top Dogs roundup captures the best tweets, milestones, and moments that keep the ecosystem thriving. From passionate fans to big wins, here's what's making tails wag across the Shiba Inu world right now.

Paw up, adventurers—Astra Nova just unleashed The Legends Quest! Weekly challenges, massive \$SHIB prizes, and only one rule: Legends only. Time to climb, compete, and conquer. Who's ready to fetch 30 million SHIB?



Shib isn't just a meme — it's a movement.

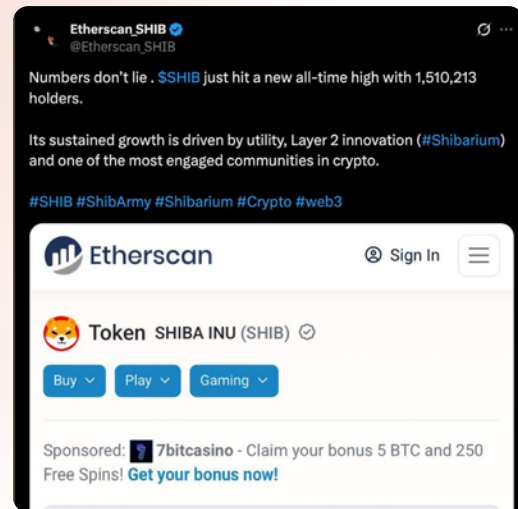
Thanks to you, Shib Army, \$SHIB is making real noise in the world of [crypto payments](#). CoinGate confirms it: people love paying with SHIB. It's fast, simple, and backed by one of the most unstoppable communities in the game — that's YOU. From everyday buys to bold new biz moves, \$SHIB is opening doors. We're not just watching adoption happen — we are the adoption.

The Shib Army isn't slowing down — it's leveling up.

\$SHIB just hit a new all-time high with **1,510,213** holders. That's not hype — that's *history in the making*.

Real growth. Real numbers. Driven by utility, the power of Shibarium, and a community that shows up every single day. This isn't just a meme token. It's a movement with teeth.

And we're just getting started!



Shibarium is moving fast — processing **4.52 million transactions** every single day with gas fees dropping to new lows.

The decentralized future of #SHIB isn't just a dream. It's happening. And it's happening now.

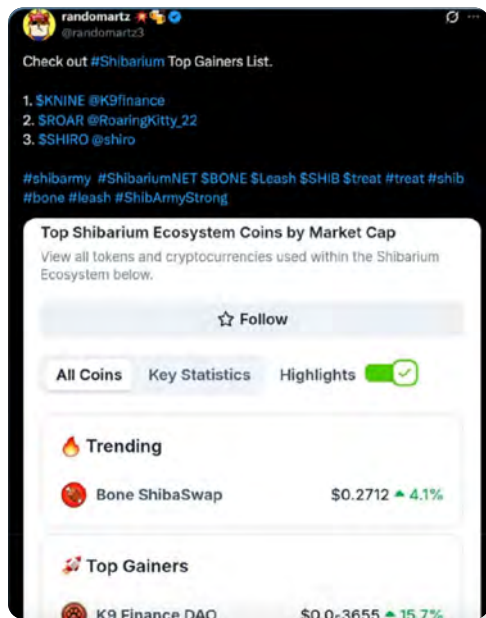
Get ready, Shib Army — the next chapter is already here.

Skyhighcrypto.SHIB, a proud member of the Shib Army, just **dropped a shoutout** to Shib Magazine and its official newsletter The Shib Insider — inviting everyone to dive into the latest articles.

If you want the real scoop on the community, the updates, and everything Shib, this is where to be.

Stay sharp, stay informed, and stay Shibtastic.





The top dogs on this week's Shibarium Top Gainers list consists of a strong pack.

Leading the charge:

\$KNINE (@K9finance)

\$ROAR (@RoaringKitty_22)

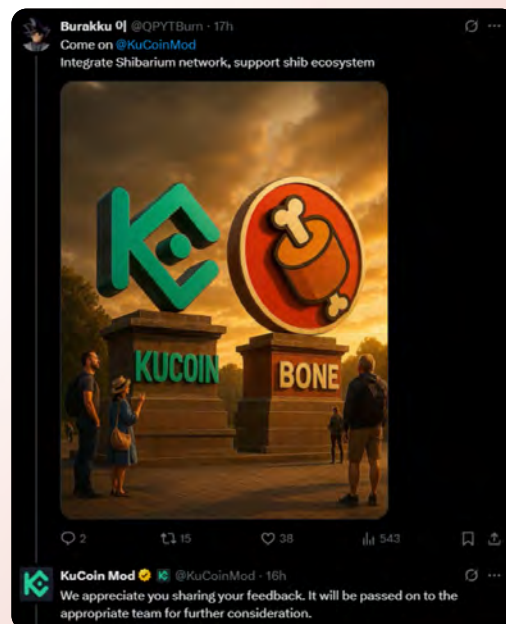
\$SHIRO (@shiro)

Big moves, big energy — the Shibarium ecosystem is heating up. Who's next?

KuCoin acknowledged Shib Army's request!

It said, the request will be "passed on to the appropriate team for further consideration."

Web3 is evolving — and it looks like KuCoin's watching where the real innovation's happening.





Shib Army OG dhelSHIB just dropped a gem on X — #SHIBARMY is **trending** in the Business & Finance category.

Not just a meme. Not just a movement. We're making noise in the big leagues now.

Keep it loud, keep it proud, Shib Army!

That's a wrap for now, Shib Army! We'll be howling back soon with more alpha, action, and all things Shib. Keep your wallets ready and your vibes high — until next time, stay fierce, stay decentralized.



"Whereas most technologies tend to automate workers on the periphery doing menial tasks, blockchains automate away the center. Instead of putting the taxi driver out of a job, blockchain puts Uber out of a job and lets the taxi drivers work with the customer directly..."

— Vitalik Buterin, 2018

Finished the journey?

Let's make it unforgettable—grab one of the 3,000
free NFTs waiting to be minted this week!



The Shib 

The Shib